

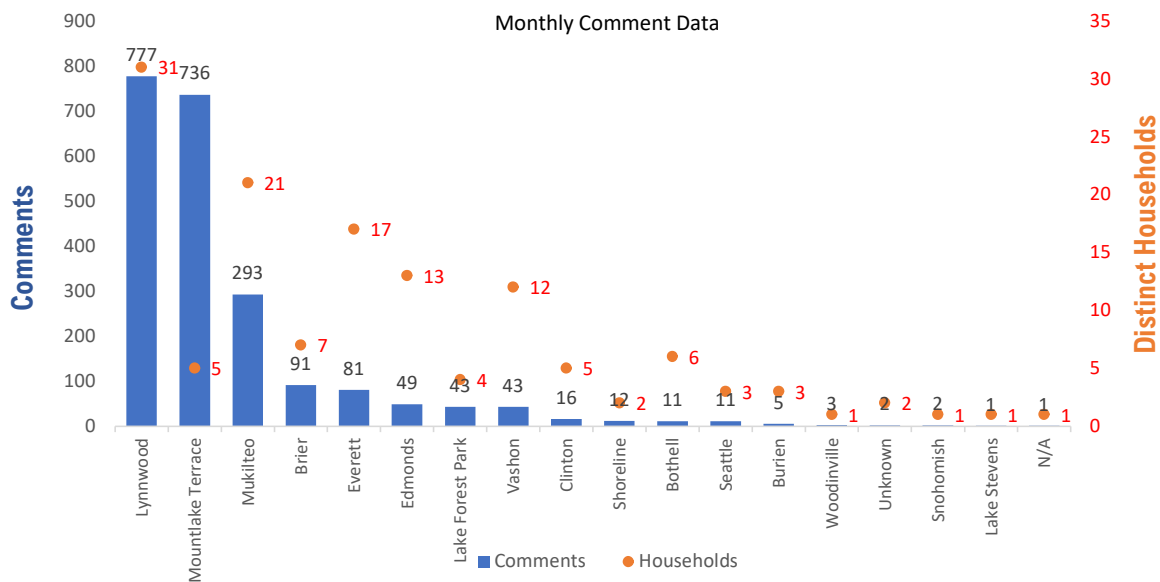


## Monthly Totals & Trends

**2,177**  
Noise Comments
**135**  
Distinct Households
**714**  
Distinct Households YTD
**1,760 (80.8%)**  
Comments by top 10 households

Paine Field – Snohomish County Airport uses a variety of methods to identify, track, and reduce the impact of aircraft noise on the surrounding communities. Noise comments are managed using a third-party application that correlates each complaint with a specific flight to help airport staff identify the primary causes of noise. The airport does not have the authority to restrict aircraft operations or change aircraft flight paths. Instead, the airport relies on pilots following the published voluntary noise abatement procedures. Several factors may require a pilot to deviate from these procedures including air traffic control instruction or safety considerations. Paine Field – Snohomish County Airport is owned and operated by Snohomish County in compliance with federal aviation regulations. Because the airport operates under the guidance of federal regulations, it's facilities must remain open to users of the national airspace system 24 hours a day, 365 days a year.

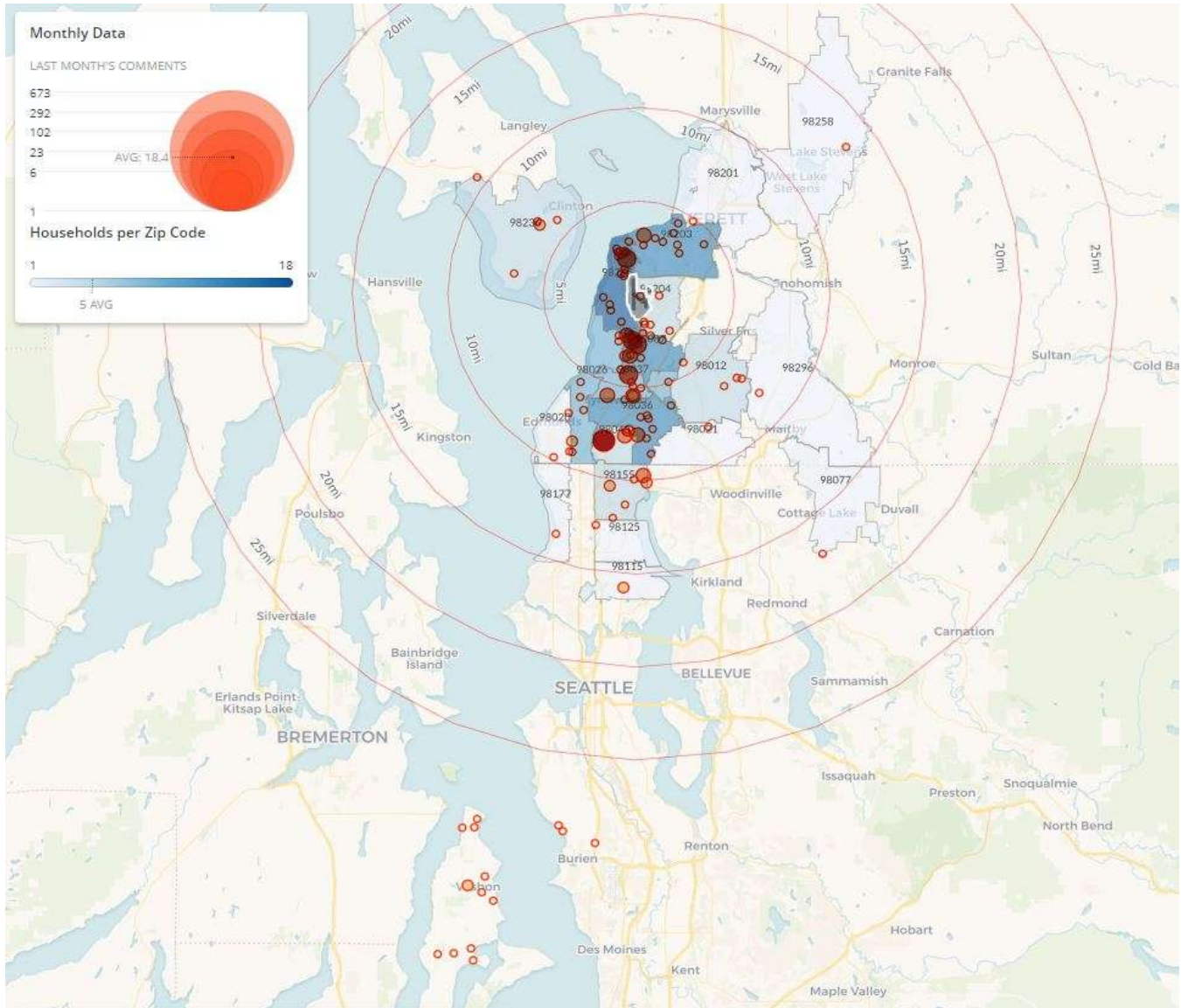
### Monthly Totals & Trends: By City



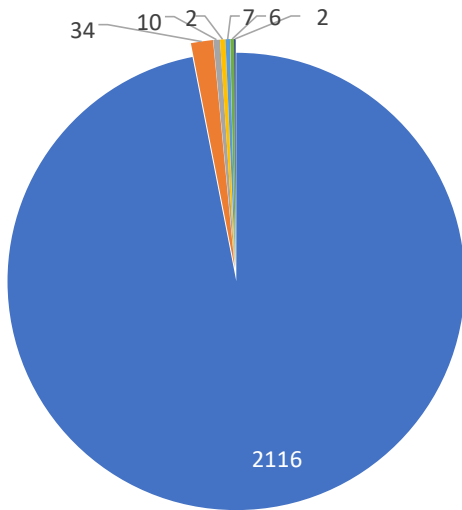
CITY	COMMENTS	DISTINCT HOUSEHOLDS	AVG COMMENTS/ HOUSEHOLD
Lynnwood	777	31	25
Mountlake Terrace	736	5	147
Mukilteo	293	21	14
Brier	91	7	13
Everett	81	17	5
Edmonds	49	13	4
Lake Forest Park	43	4	11
Vashon	43	12	4
Clinton	16	5	3
Shoreline	12	2	6
Seattle	11	3	4
Bothell	11	6	2
Burien	5	3	2
Woodinville	3	1	3
Unknown	2	2	1
Snohomish	2	1	2
Remaining Cities	2	2	1
<b>Totals</b>	<b>2,177</b>	<b>135</b>	<b>16</b>

## Noise Comment Map: By Zip Code

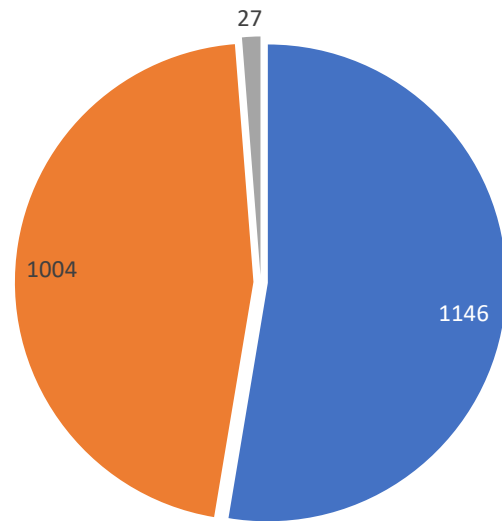
NOTES: Noise comments from households submitted without valid address information are not depicted on the map.



## Comment Breakdown: Types & Filing Method



■ Loud    ■ Low    ■ Unspecified    ■ Other  
■ Military    ■ Off Course    ■ Helicopter

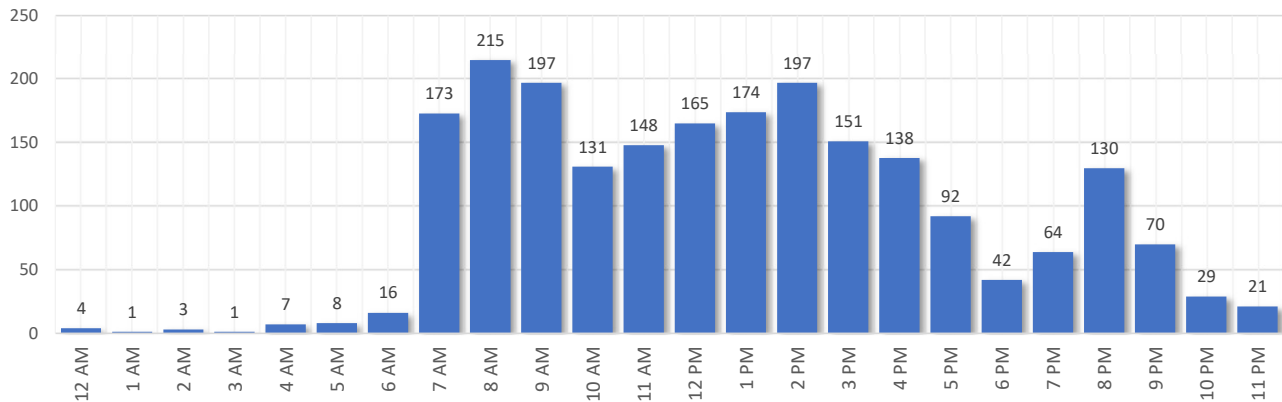


■ Web App    ■ Webform    ■ Hotline

COMMENT TYPE	COMMENTS
Loud	2116
Low	34
Unspecified	10
Other	2
Military	7
Off Course	6
Helicopter	2

METHOD RECEIVED	COUNT
Web App	1146
Webform	1004
Hotline	27

### Complaints by Time of Day

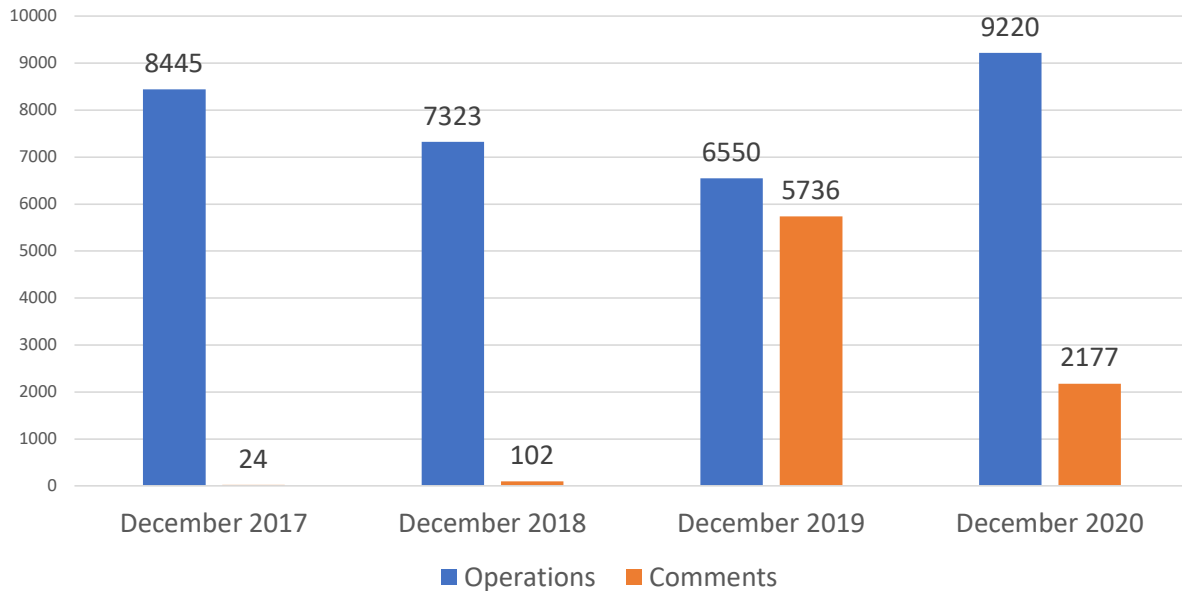




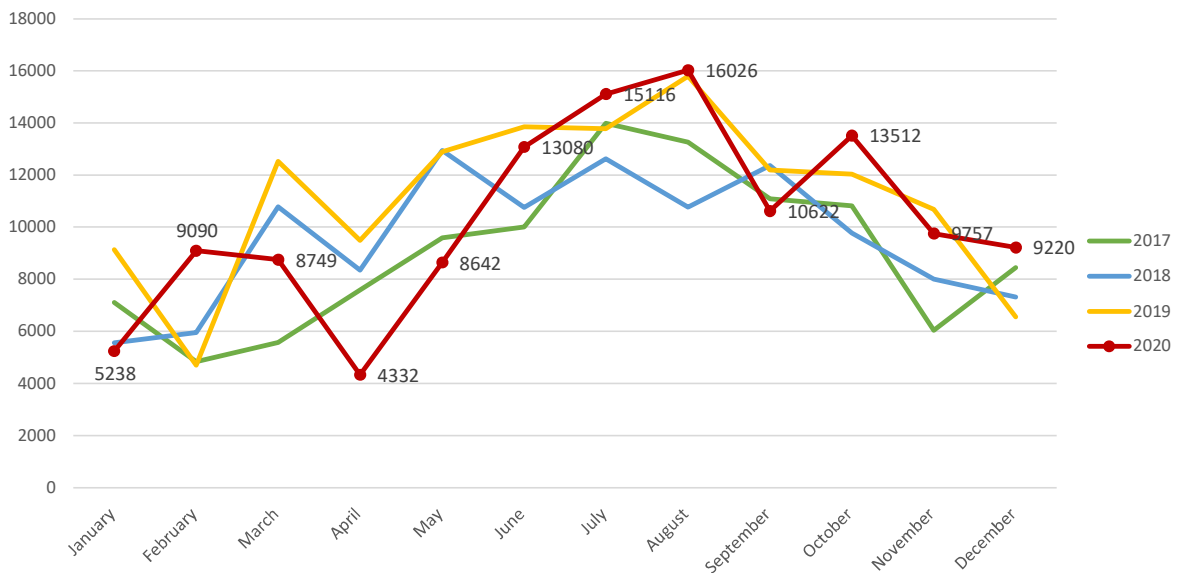
Aircraft Operations Summary:

During December 2020, the Paine Field Air Traffic Control Tower reported 9220 flight operations. This is a 40.7% increase in operations compared to December 2019 which had 6550 operations. The four-year average for December is 7884 flight operations. Total operations for December were 16.9% above the average.

Monthly Operations VS Noise Comments



Monthly Operations Four Year Data



Paine Field Website: [www.painefield.com](http://www.painefield.com)  
 Noise Abatement Procedures: [www.painefield.com/159/Noise-Abatement-Procedures](http://www.painefield.com/159/Noise-Abatement-Procedures)  
 Paine Field Noise FAQ: [www.painefield.com/215/Noise-FAQs](http://www.painefield.com/215/Noise-FAQs)  
 To submit a noise comment online: [www.planenoise.com/kpae](http://www.planenoise.com/kpae)  
 To submit a noise comment by phone: (425) 284-0500