

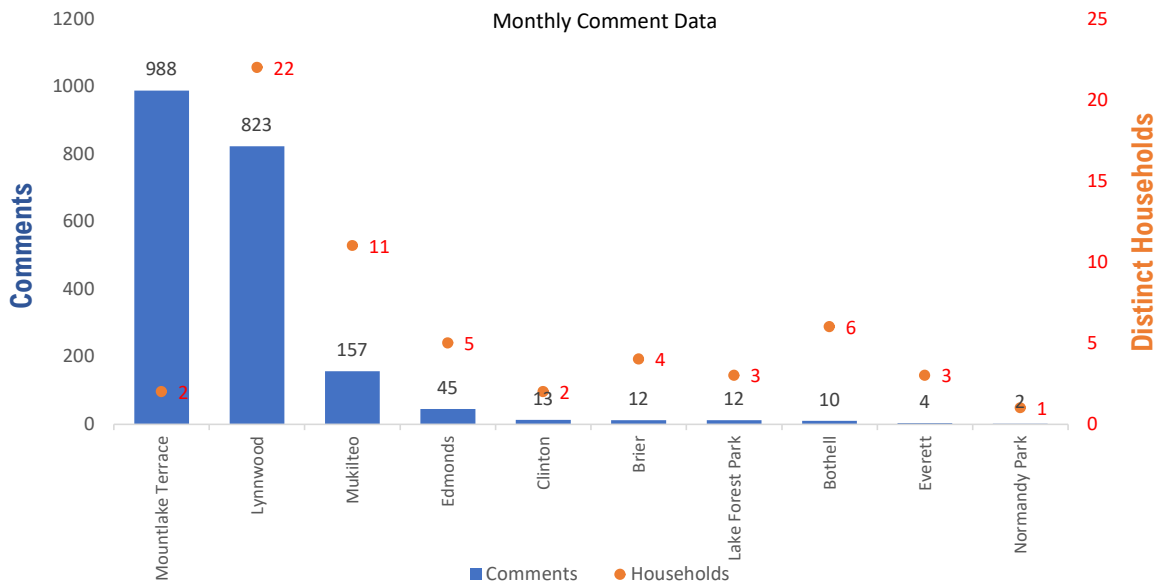


## Monthly Totals & Trends

2,071                      60                      77                      1,942 (93.8%)  
 Noise Comments                      Distinct Households                      Distinct Households YTD                      Comments by top 10 households

Paine Field – Snohomish County Airport uses a variety of methods to identify, track, and reduce the impact of aircraft noise on the surrounding communities. Noise comments are managed using a third-party application that correlates each complaint with a specific flight to help airport staff identify the primary causes of noise. The airport does not have the authority to restrict aircraft operations or change aircraft flight paths. Instead, the airport relies on pilots following the published voluntary noise abatement procedures. Several factors may require a pilot to deviate from these procedures including air traffic control instruction or safety considerations. Paine Field – Snohomish County Airport is owned and operated by Snohomish County in compliance with federal aviation regulations. Because the airport operates under the guidance of federal regulations, its facilities must remain open to users of the national airspace system 24 hours a day, 365 days a year.

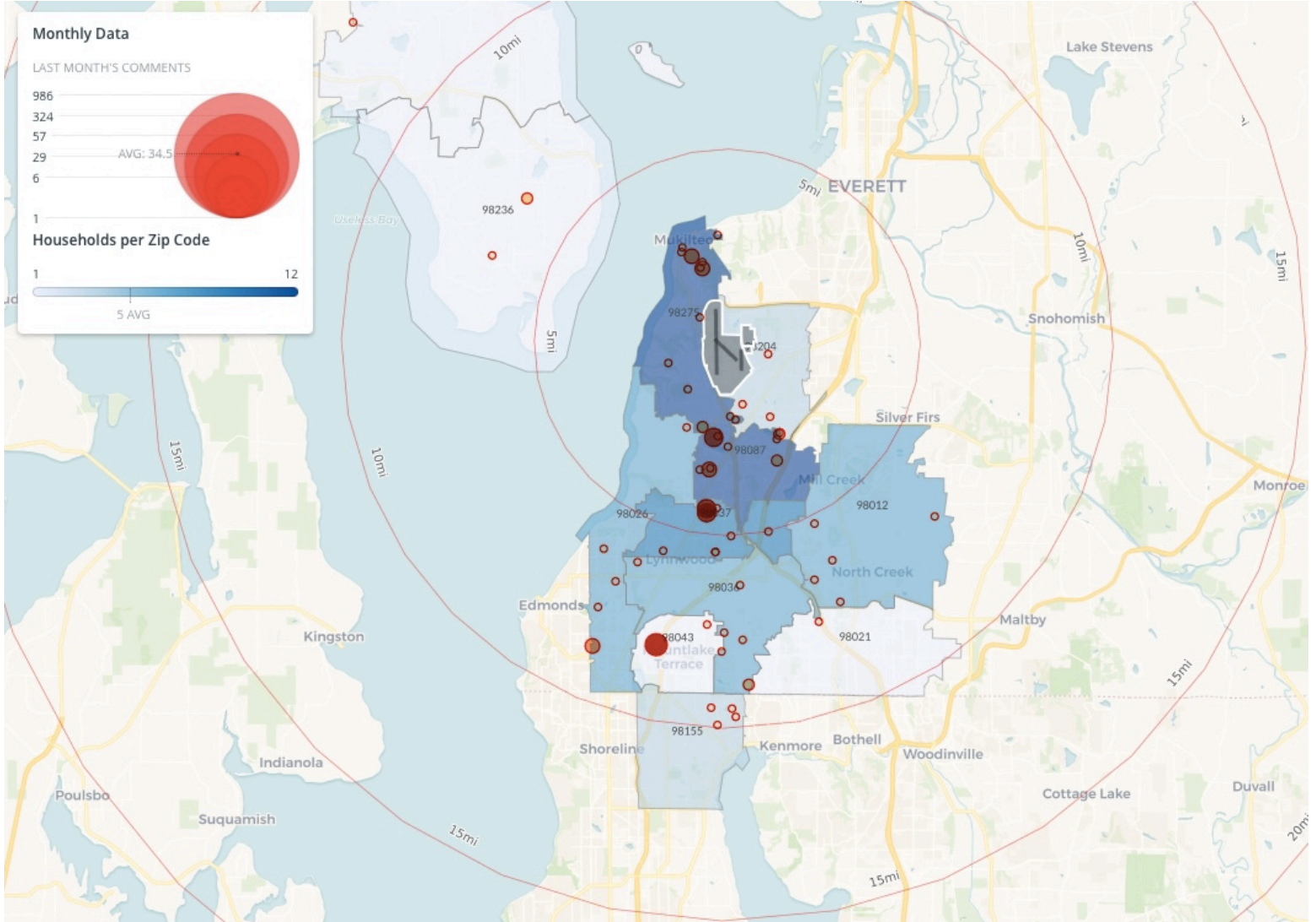
### Monthly Totals & Trends: By City



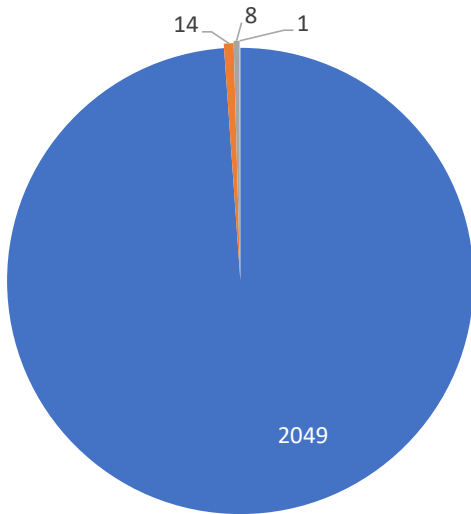
CITY	COMMENTS	DISTINCT HOUSEHOLDS	AVG COMMENTS/HOUSEHOLD
Mountlake Terrace	988	2	494.0
Lynnwood	823	22	37.4
Mukilteo	157	11	14.3
Edmonds	45	5	9.0
Clinton	13	2	6.5
Lake Forest Park	12	3	4.0
Brier	12	4	3.0
Bothell	10	6	1.7
Freeland	5	1	5.0
Everett	4	3	1.3
Normandy Park	2	1	2.0
<b>Totals</b>	<b>2,071</b>	<b>60</b>	<b>34.5</b>

## Noise Comment Map: By Zip Code

NOTES: Noise comments from households submitted without valid address information are not depicted on the map.

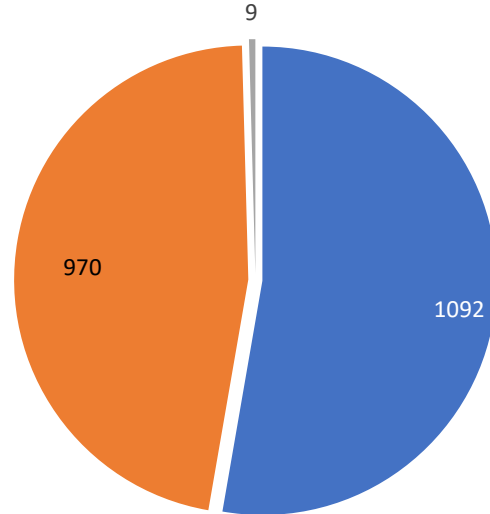


## Comment Breakdown: Types & Filing Method



■ Loud   ■ Low   ■ Unspecified   ■ Military

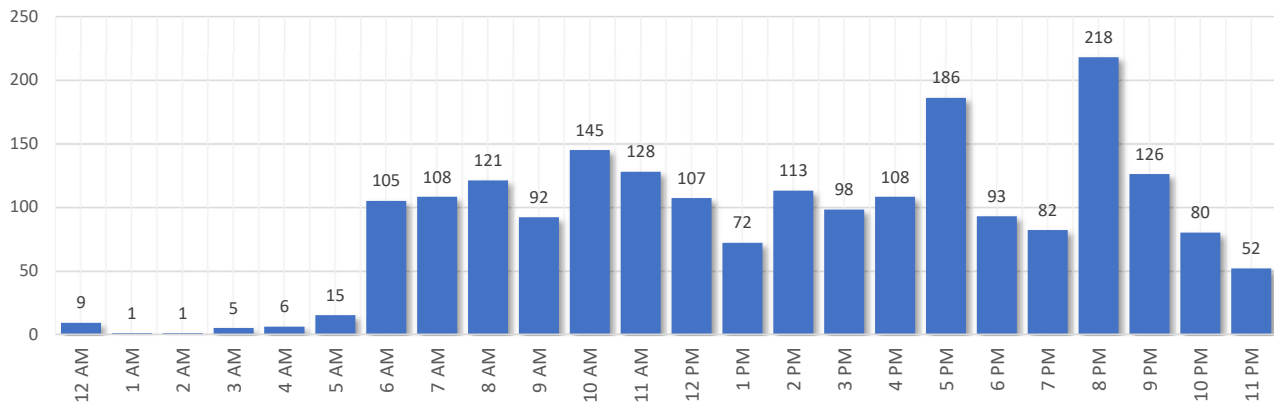
COMMENT TYPE	COMMENTS
Loud	2049
Low	14
Unspecified	8
Military	1



■ Webform   ■ Web App   ■ Hotline

	METHOD RECEIVED	COUNT
Webform	Comment submitted via Paine Field website	1092
Web App	Third party web application	970
Hotline	Voicemail message via phone system	9

## Complaints by Time of Day

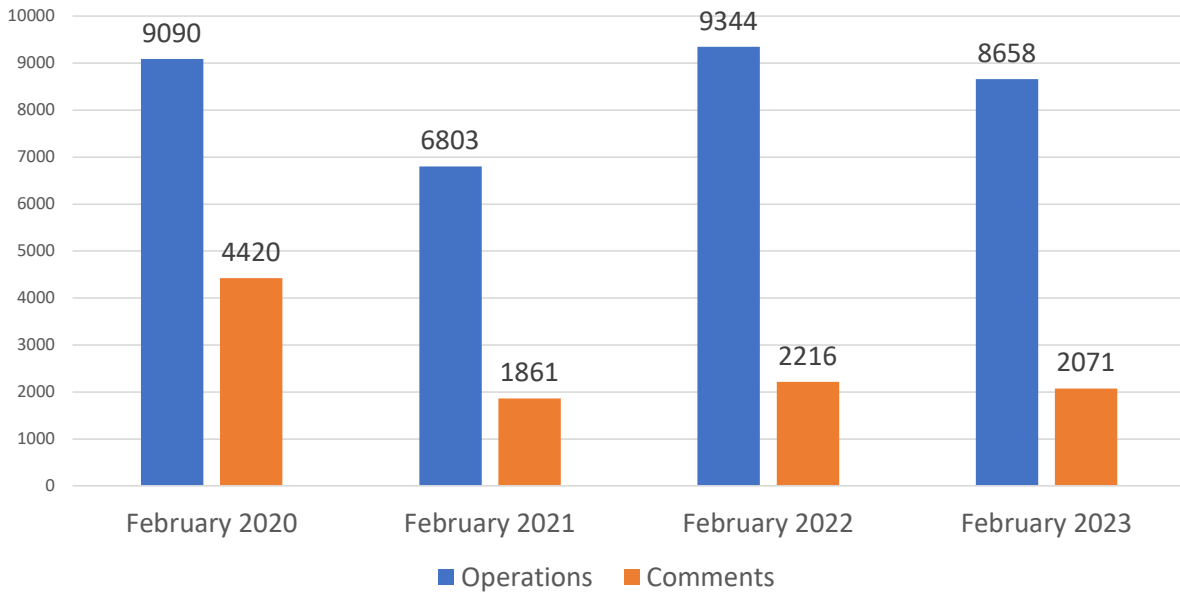




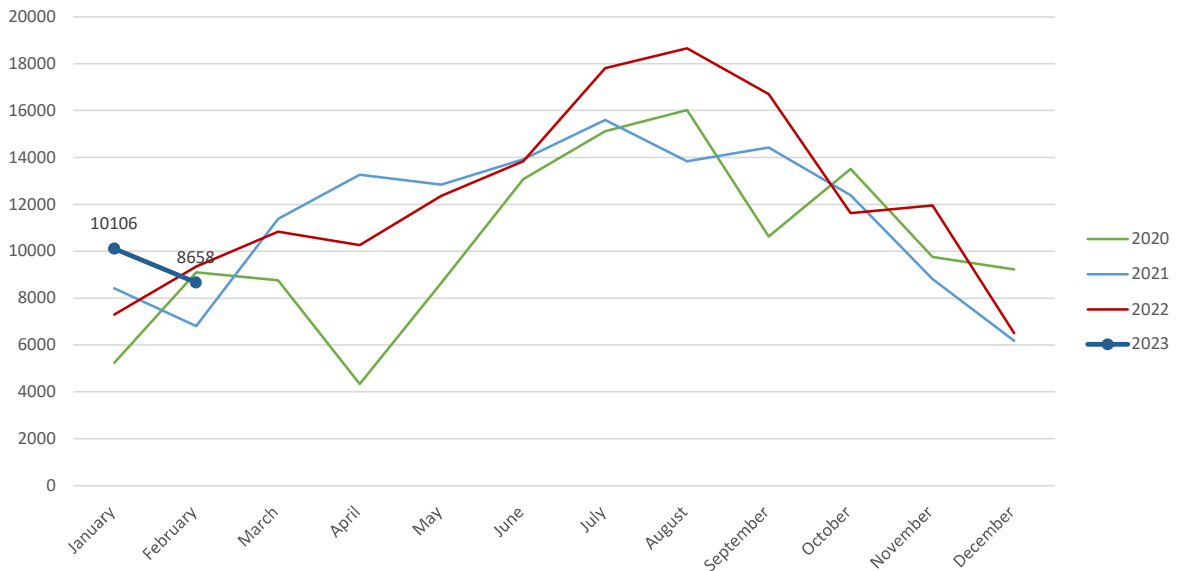
Aircraft Operations Summary:

During February 2023, the Paine Field Air Traffic Control Tower reported 8658 flight operations. This is a 7.3% decrease in operations compared to February 2022 which had 9344 operations. The four-year average for February is 8473 flight operations. Total operations for February were 2.1% above the 4-year average.

Monthly Operations VS Noise Comments



Monthly Operations Four Year Data



Paine Field Website: [www.paineairport.com](http://www.paineairport.com)  
 Noise Abatement Procedures: [www.paineairport.com/159/Noise-Abatement-Procedures](http://www.paineairport.com/159/Noise-Abatement-Procedures)  
 Paine Field Noise FAQ: [www.paineairport.com/215/Noise-FAQs](http://www.paineairport.com/215/Noise-FAQs)  
 To submit a noise comment online: [www.planenoise.com/kpae](http://www.planenoise.com/kpae)  
 To submit a noise comment by phone: (425) 284-0500