

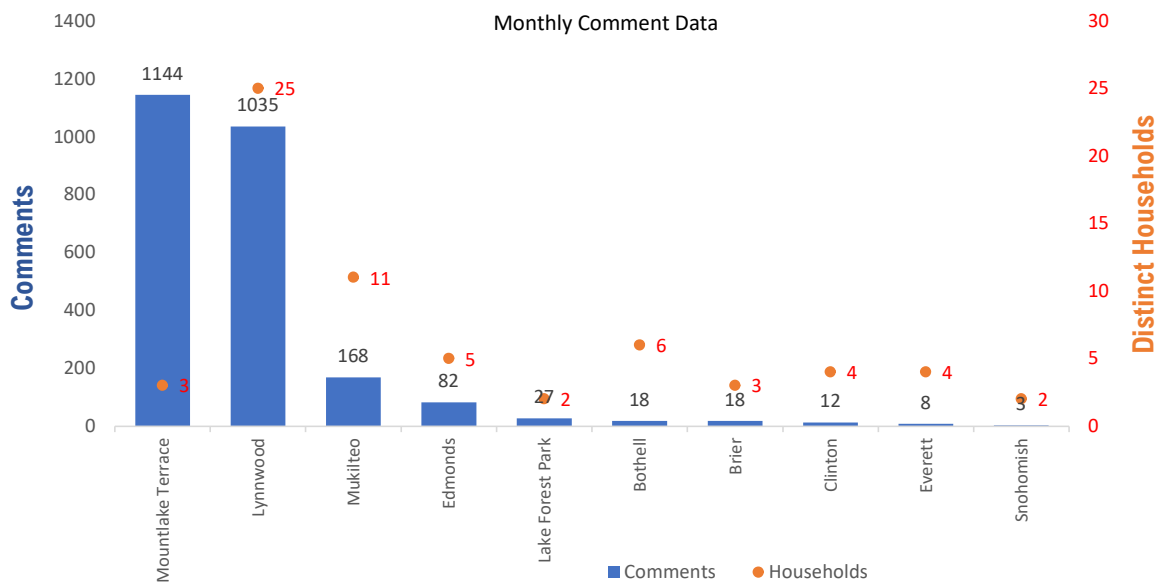


Monthly Totals & Trends

2,517
Noise Comments
66
Distinct Households
129
Distinct Households YTD
2,347 (93.2%)
Comments by top 10 households

Paine Field – Snohomish County Airport uses a variety of methods to identify, track, and reduce the impact of aircraft noise on the surrounding communities. Noise comments are managed using a third-party application that correlates each complaint with a specific flight to help airport staff identify the primary causes of noise. The airport does not have the authority to restrict aircraft operations or change aircraft flight paths. Instead, the airport relies on pilots following the published voluntary noise abatement procedures. Several factors may require a pilot to deviate from these procedures including air traffic control instruction or safety considerations. Paine Field – Snohomish County Airport is owned and operated by Snohomish County in compliance with federal aviation regulations. Because the airport operates under the guidance of federal regulations, its facilities must remain open to users of the national airspace system 24 hours a day, 365 days a year.

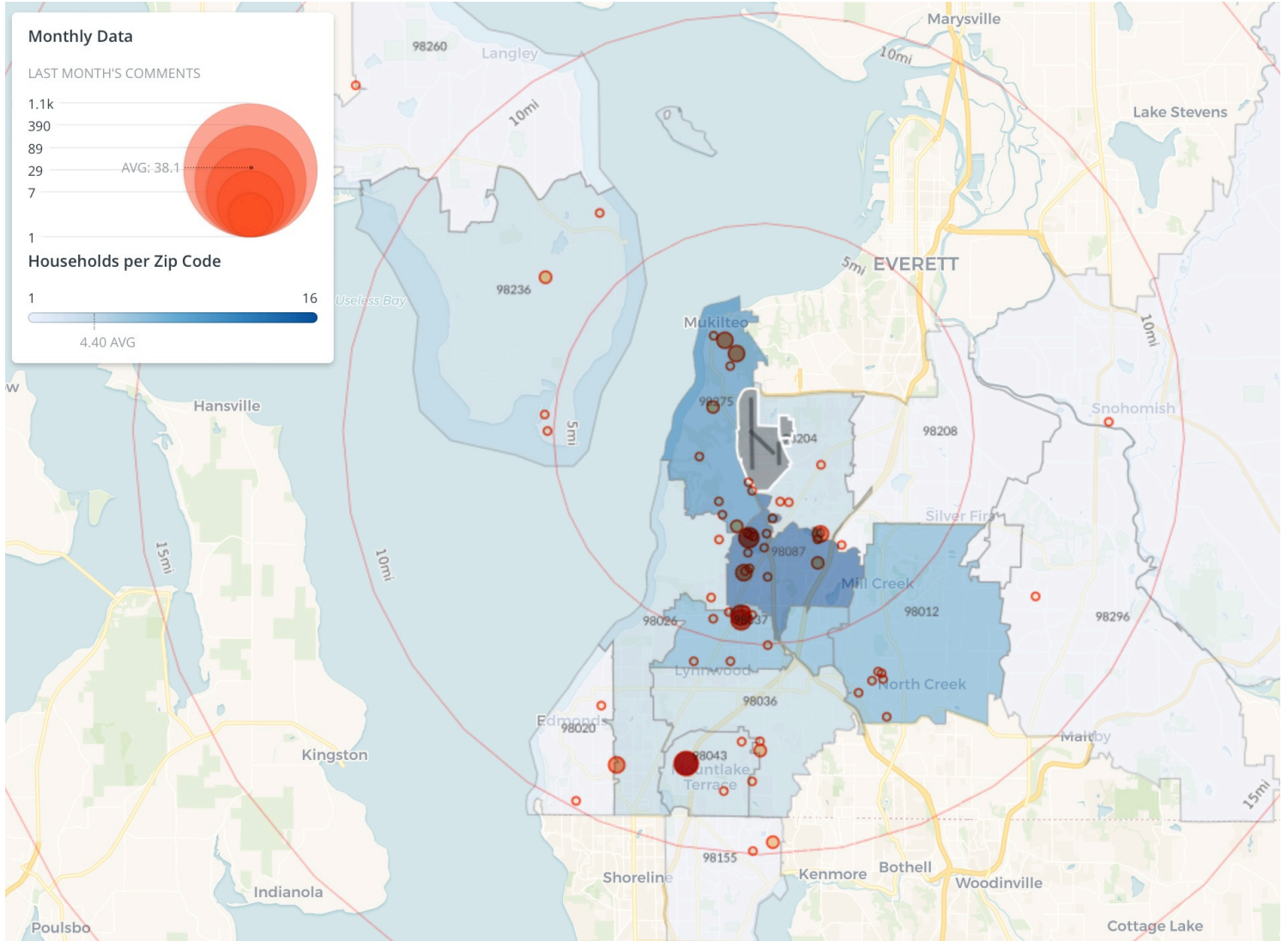
Monthly Totals & Trends: By City



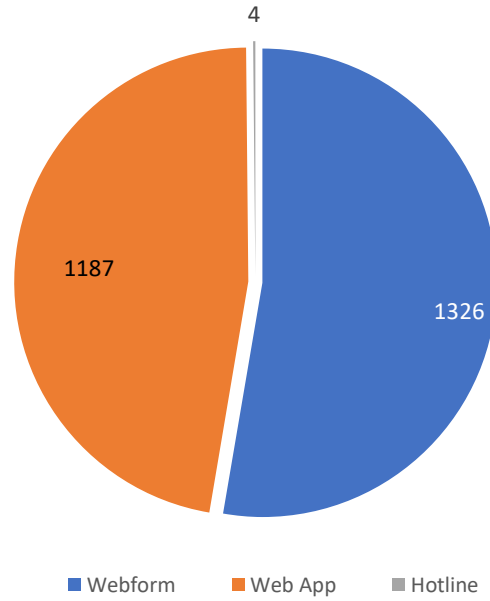
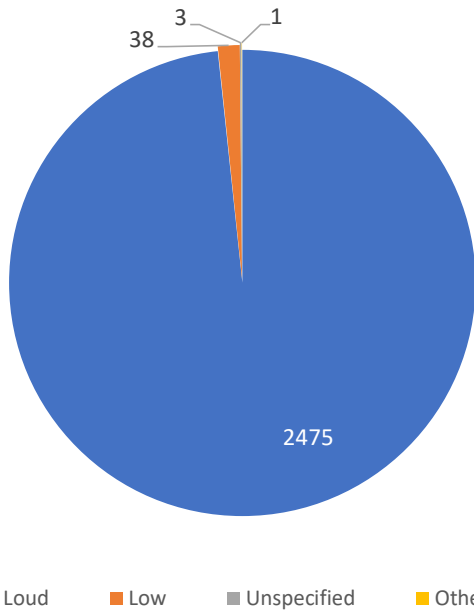
| CITY | COMMENTS | DISTINCT HOUSEHOLDS | AVG COMMENTS/ HOUSEHOLD |
|-------------------|--------------|---------------------|-------------------------|
| Mountlake Terrace | 1,144 | 3 | 381.3 |
| Lynnwood | 1,035 | 25 | 41.4 |
| Mukilteo | 168 | 11 | 15.3 |
| Edmonds | 82 | 5 | 16.4 |
| Lake Forest Park | 27 | 2 | 13.5 |
| Brier | 18 | 3 | 6.0 |
| Bothell | 18 | 6 | 3.0 |
| Clinton | 12 | 4 | 3.0 |
| Everett | 8 | 4 | 2.0 |
| Snohomish | 3 | 2 | 1.5 |
| Freeland | 2 | 1 | 2.0 |
| Totals | 2,517 | 66 | 38.1 |

Noise Comment Map: By Zip Code

NOTES: Noise comments from households submitted without valid address information are not depicted on the map.



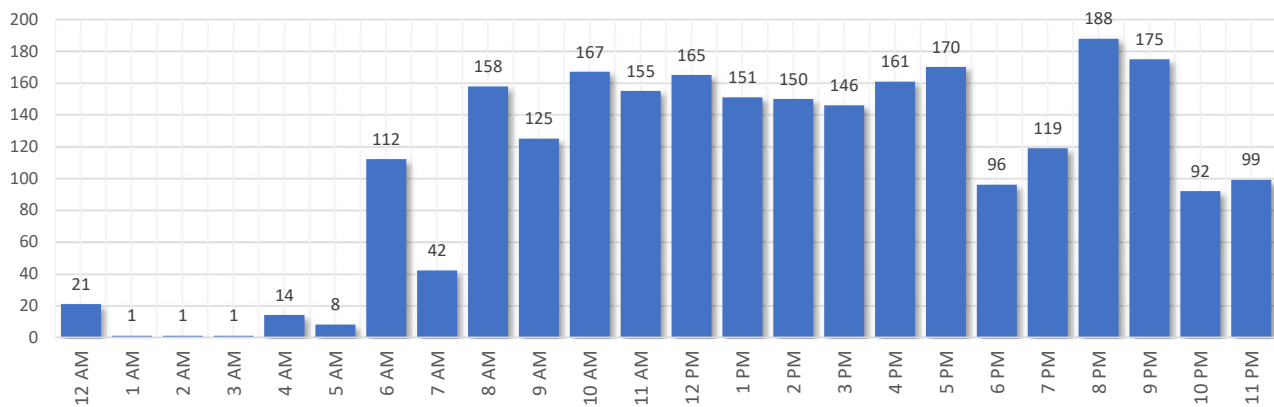
Comment Breakdown: Types & Filing Method



| COMMENT TYPE | COMMENTS |
|--------------|----------|
| Loud | 2475 |
| Low | 38 |
| Unspecified | 3 |
| Other | 1 |

| METHOD RECEIVED | COUNT | |
|-----------------|---|------|
| Webform | Comment submitted via Paine Field website | 1326 |
| Web App | Third party web application | 1187 |
| Hotline | Voicemail message via phone system | 4 |

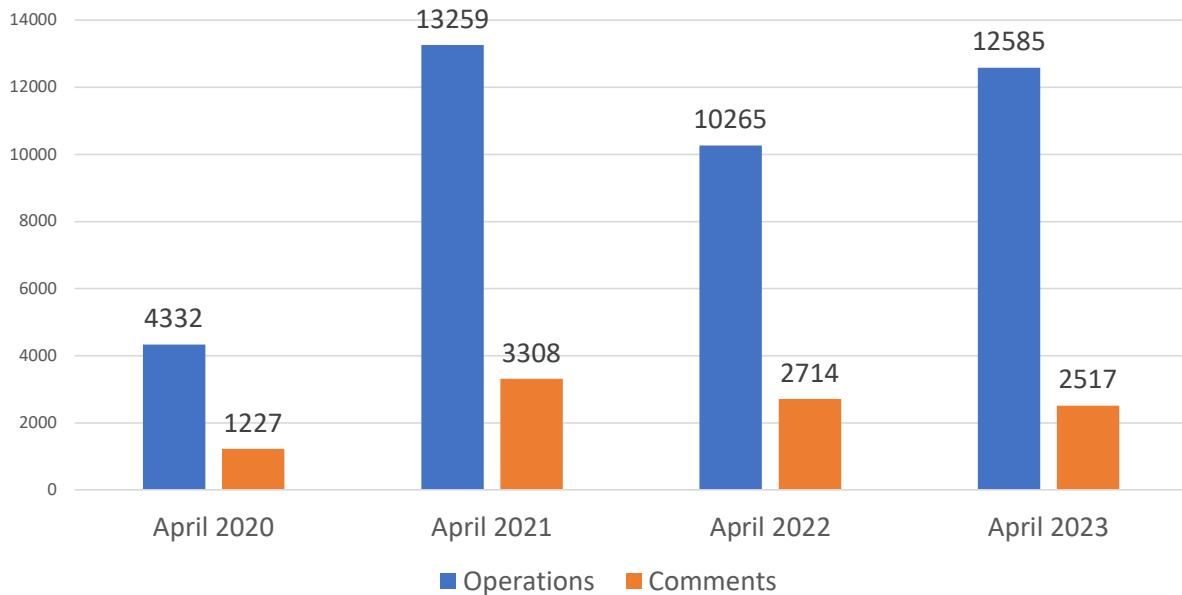
Complaints by Time of Day



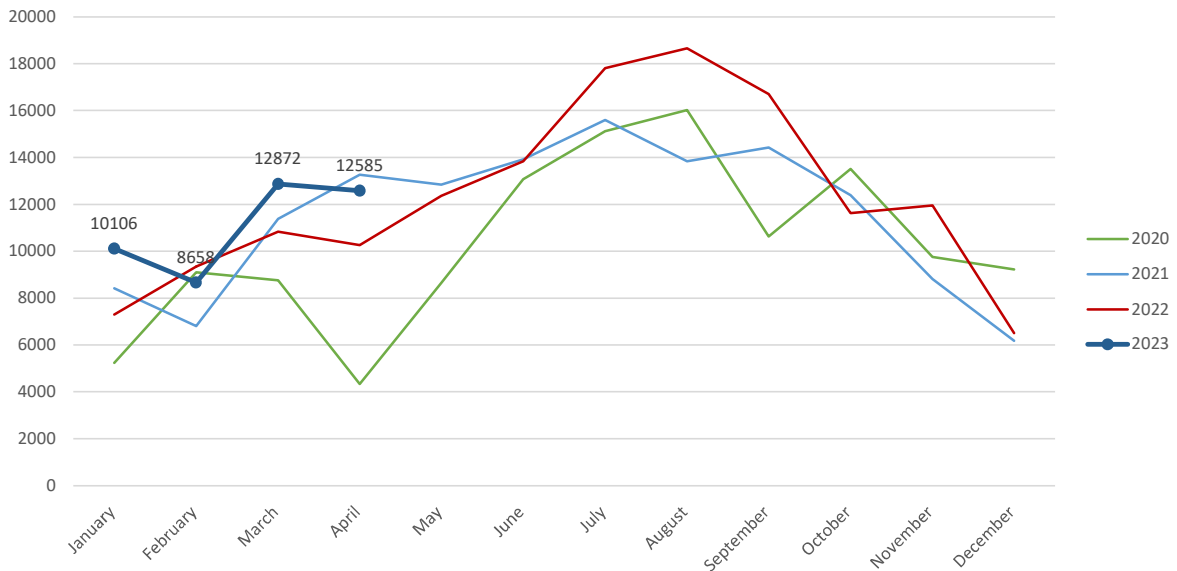
Aircraft Operations Summary:

During April 2023, the Paine Field Air Traffic Control Tower reported 12585 flight operations. This is a 22.6% increase in operations compared to April 2022 which had 10265 operations. The four-year average for April is 10110 flight operations. Total operations for April were 24.4% above the 4-year average.

Monthly Operations VS Noise Comments



Monthly Operations Four Year Data



Paine Field Website: www.paineairport.com
 Noise Abatement Procedures: www.paineairport.com/159/Noise-Abatement-Procedures
 Paine Field Noise FAQ: www.paineairport.com/215/Noise-FAQs
 To submit a noise comment online: www.planenoise.com/kpae
 To submit a noise comment by phone: (425) 284-0500