

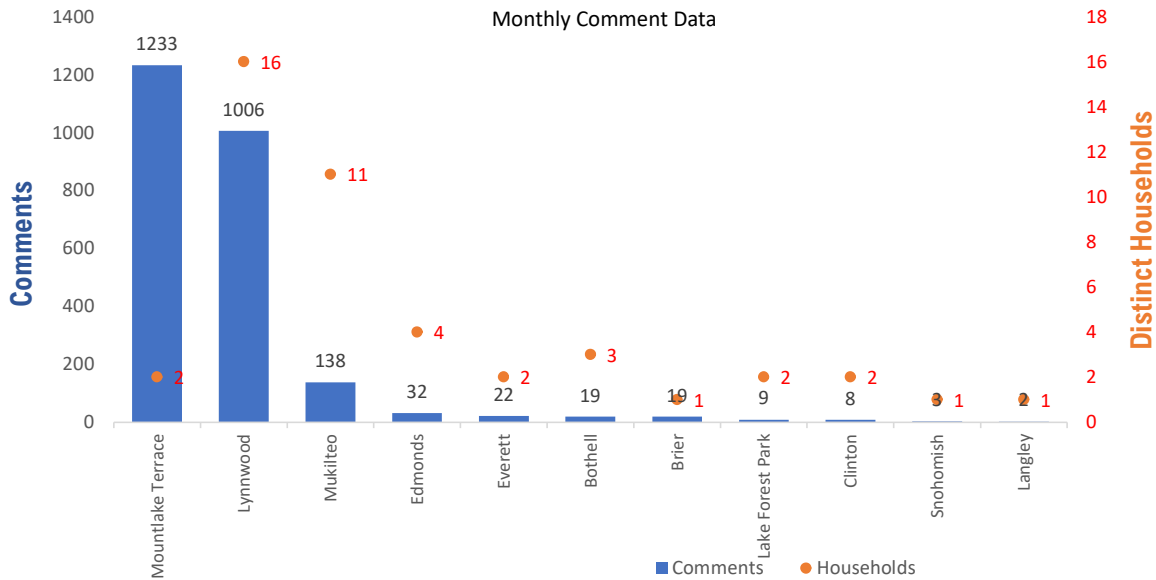


Monthly Totals & Trends

2,492 46 280 2,289 (91.9%)
 Noise Comments Distinct Households Distinct Households YTD Comments by top 10 households

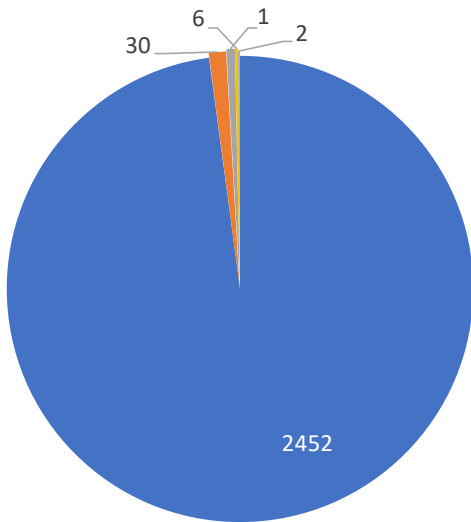
Paine Field – Snohomish County Airport uses a variety of methods to identify, track, and reduce the impact of aircraft noise on the surrounding communities. Noise comments are managed using a third-party application that correlates each complaint with a specific flight to help airport staff identify the primary causes of noise. The airport does not have the authority to restrict aircraft operations or change aircraft flight paths. Instead, the airport relies on pilots following the published voluntary noise abatement procedures. Several factors may require a pilot to deviate from these procedures including air traffic control instruction or safety considerations. Paine Field – Snohomish County Airport is owned and operated by Snohomish County in compliance with federal aviation regulations. Because the airport operates under the guidance of federal regulations, its facilities must remain open to users of the national airspace system 24 hours a day, 365 days a year.

Monthly Totals & Trends: By City



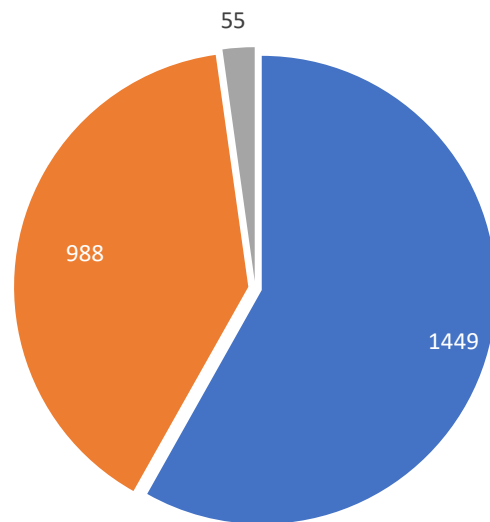
CITY	COMMENTS	DISTINCT HOUSEHOLDS	AVG COMMENTS/ HOUSEHOLD
Mountlake Terrace	1,233	2	616.5
Lake Forest Park	9	2	4.5
Edmonds	32	4	8.0
Brier	19	1	19.0
Lynnwood	1,006	16	62.9
Bothell	19	3	6.3
Mukilteo	138	11	12.5
Everett	22	2	11.0
Clinton	8	2	4.0
Snohomish	3	1	3.0
Langley	2	1	2.0
Mill Creek	1	1	1.0
Totals	2,492	46	54.2

Comment Breakdown: Types & Filing Method



■ Loud ■ Low ■ Unspecified ■ Other ■ Runup

COMMENT TYPE	COMMENTS
Loud	2452
Low	30
Unspecified	15
Other	6
Runup	2

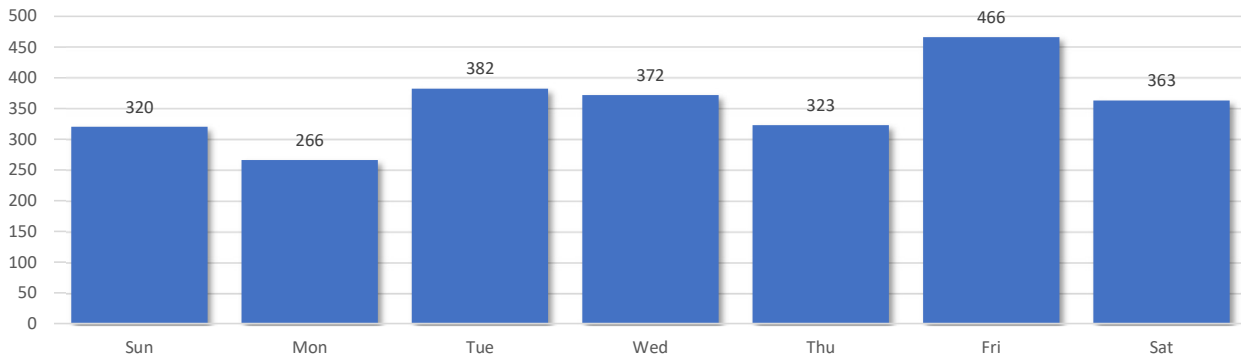


■ Webform ■ Web App ■ Hotline

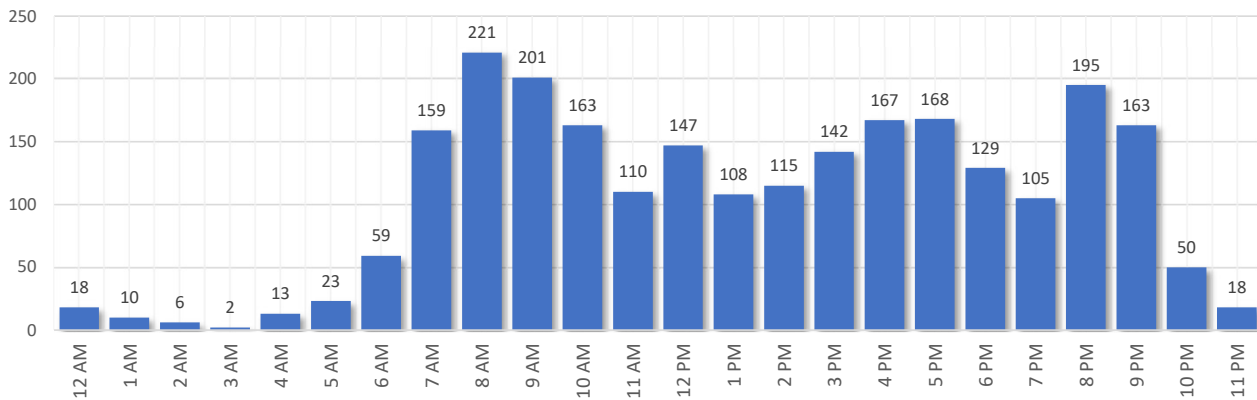
	METHOD RECEIVED	COUNT
Webform	Comment submitted via Paine Field website	1449
Web App	Third party web application	988
Hotline	Voicemail message via phone system	55

Comment Breakdown: Day and Time

Comments by Day of Week



Comments by Time of Day

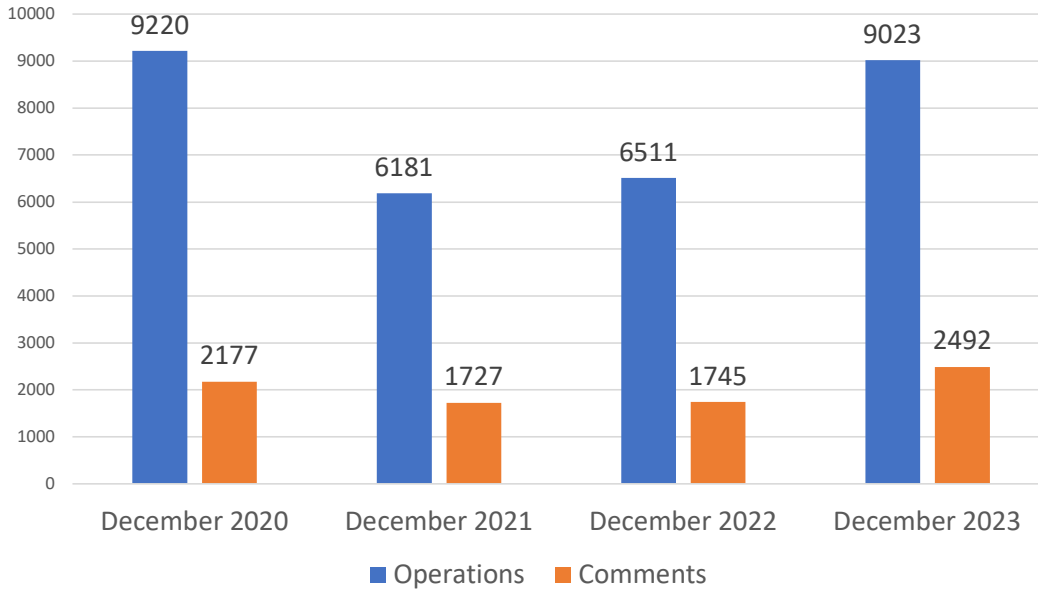




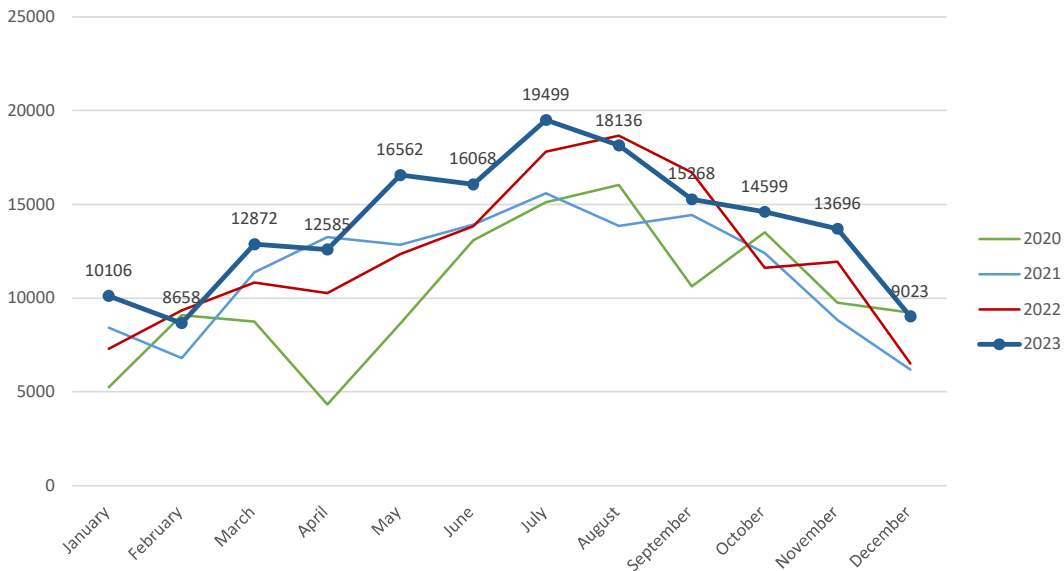
Aircraft Operations Summary:

During December 2023, the Paine Field Air Traffic Control Tower reported 9023 flight operations. This is a 38.5% increase in operations compared to December 2022 which had 6511 operations. The four-year average for December is 7733 flight operations. Total operations for December were 16.6% above the 4-year average.

Monthly Operations VS Noise Comments



Monthly Operations Four Year Data



Paine Field Website: www.paineairport.com
 Noise Abatement Procedures: www.paineairport.com/159/Noise-Abatement-Procedures
 Paine Field Noise FAQ: www.paineairport.com/215/Noise-FAQs
 To submit a noise comment online: www.planenoise.com/kpae
 To submit a noise comment by phone: (425) 284-0500