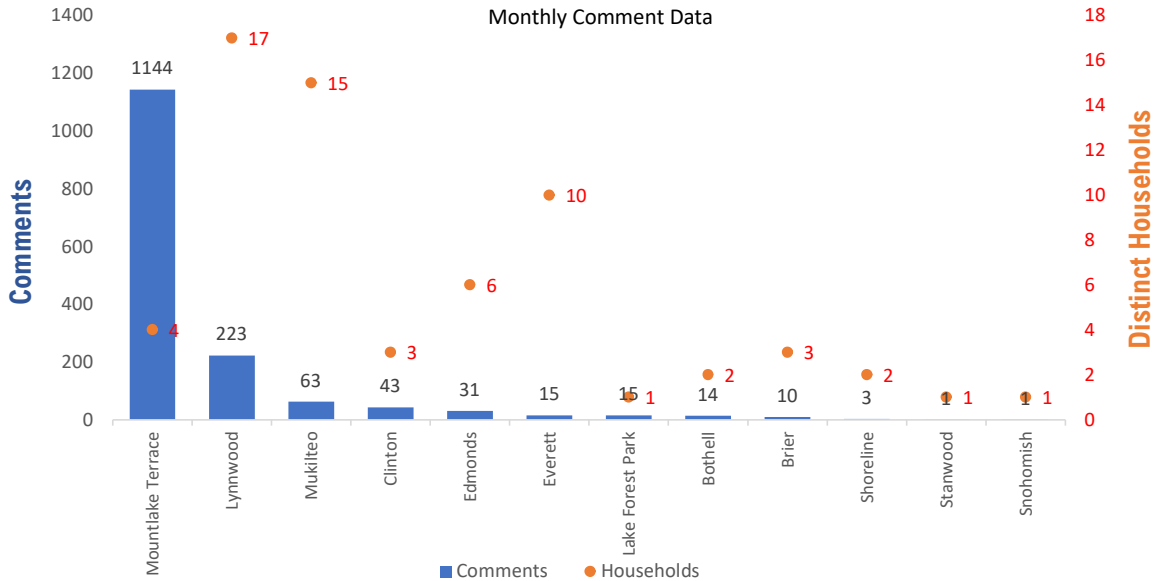


Monthly Totals & Trends

1,563
Noise Comments
65
Distinct Households
109
Distinct Households YTD
1,460 (93.4%)
Comments by top 10 households

Paine Field – Snohomish County Airport uses a variety of methods to identify, track, and reduce the impact of aircraft noise on the surrounding communities. Noise comments are managed using a third-party application that correlates each complaint with a specific flight to help airport staff identify the primary causes of noise. The airport does not have the authority to restrict aircraft operations or change aircraft flight paths. Instead, the airport relies on pilots following the published voluntary noise abatement procedures. Several factors may require a pilot to deviate from these procedures including air traffic control instruction or safety considerations. Paine Field – Snohomish County Airport is owned and operated by Snohomish County in compliance with federal aviation regulations. Because the airport operates under the guidance of federal regulations, its facilities must remain open to users of the national airspace system 24 hours a day, 365 days a year.

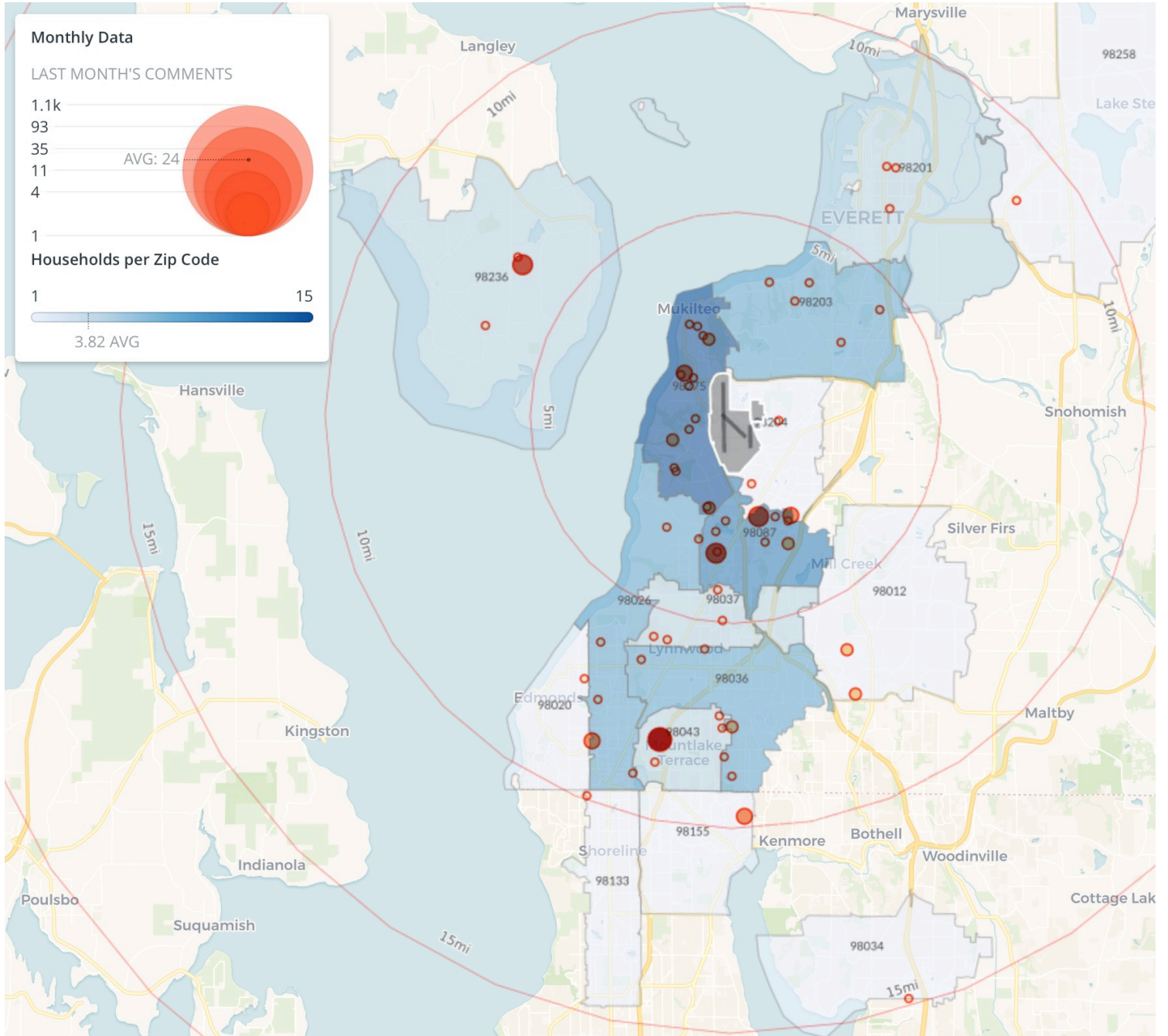
Monthly Totals & Trends: By City



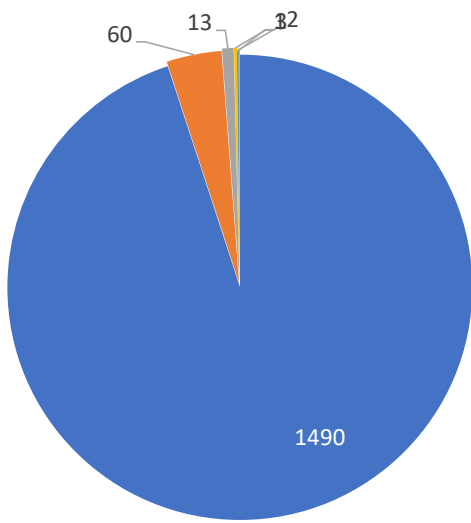
CITY	COMMENTS	DISTINCT HOUSEHOLDS	AVG COMMENTS/ HOUSEHOLD
Shoreline	3	2	1.5
Mountlake Terrace	1,144	4	286.0
Lake Forest Park	15	1	15.0
Edmonds	31	6	5.2
Brier	10	3	3.3
Lynnwood	223	17	13.1
Bothell	14	2	7.0
Mukilteo	63	15	4.2
Everett	15	10	1.5
Clinton	43	3	14.3
Stanwood	1	1	1.0
Snohomish	1	1	1.0
Totals	1563	65	24.0

Noise Comment Map: By Zip Code

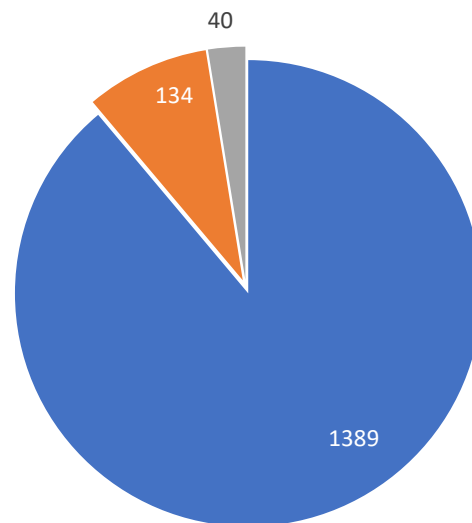
NOTES: Noise comments from households submitted without valid address information are not depicted on the map.



Comment Breakdown: Types, Filing Method & Airport Correlation



■ Loud ■ Low ■ Unspecified ■ Other ■ Off Course ■ Military

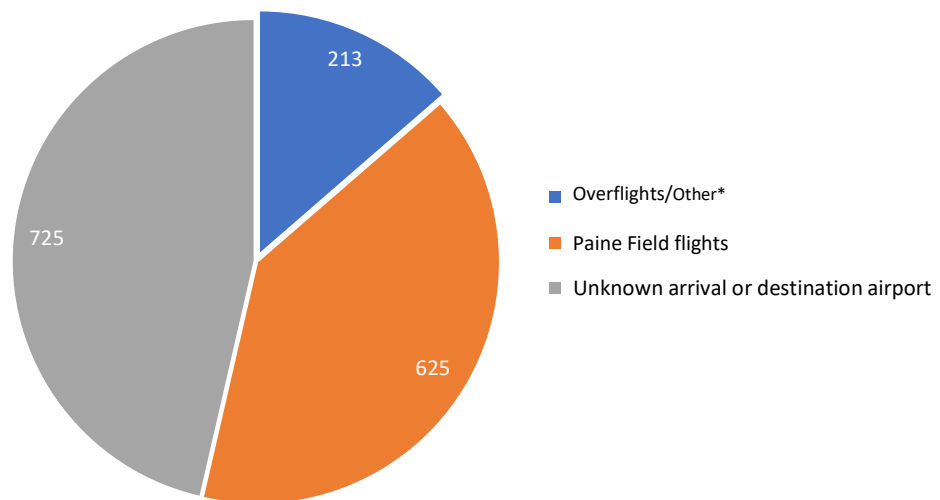


■ Webform ■ Web App ■ Hotline

COMMENT TYPE	COMMENTS
Loud	1490
Low	60
Unspecified	13
Other	3
Off Course	2
Military	1

	METHOD RECEIVED	COUNT
Webform	Comment submitted via Paine Field website	1389
Web App	Third party web application	134
Hotline	Voicemail message via phone system	40

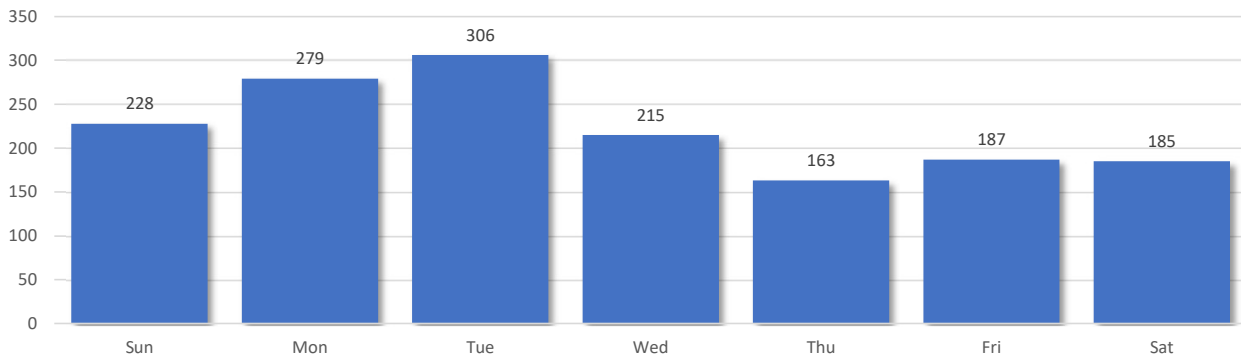
Comments by Airport/Location



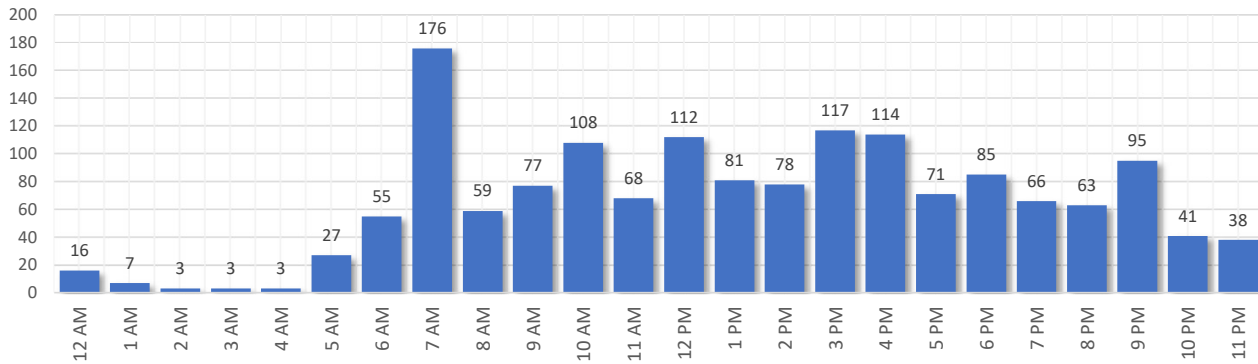
*Overflight/other flights are not directly attributed to Paine Field. They can be flights from SeaTac, Boeing Field, Arlington, Harvey Field, Whidbey Island, etc.

Comment Breakdown: Day and Time

Comments by Day of Week



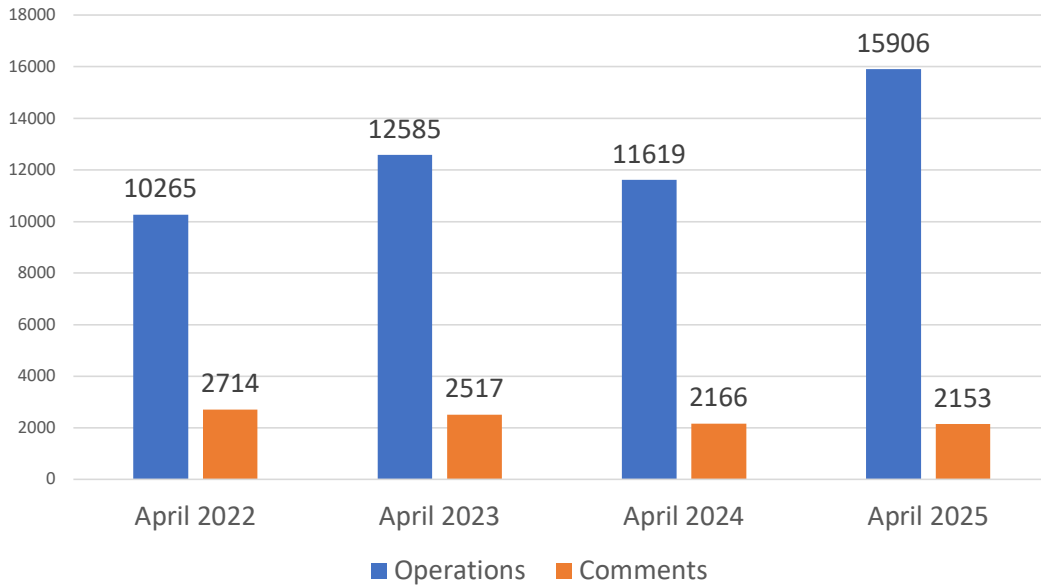
Comments by Time of Day



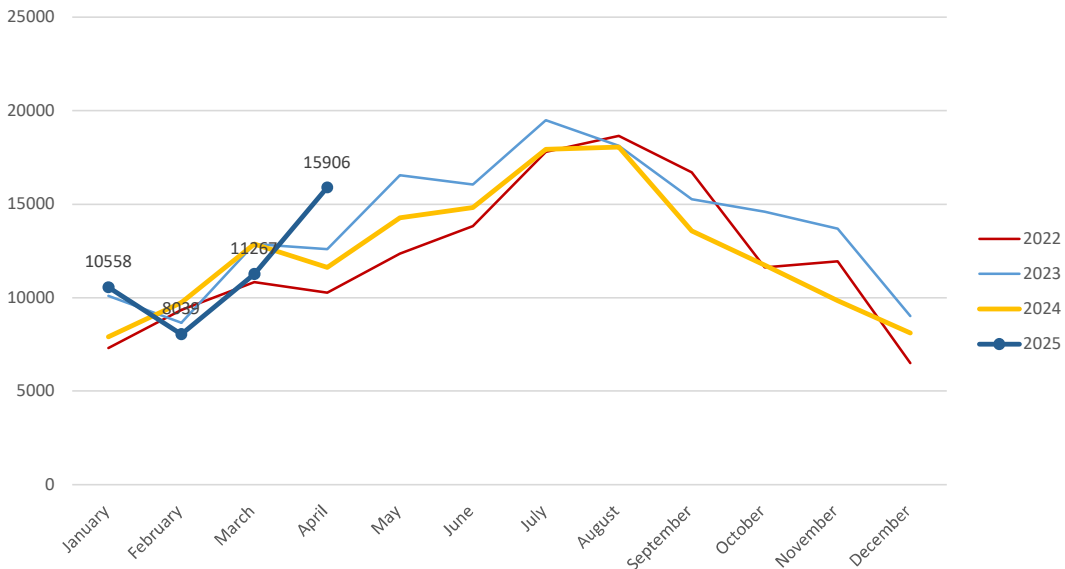
Aircraft Operations Summary:

During April 2025, the Paine Field Air Traffic Control Tower reported 15906 flight operations. This is a 36.8% increase in operations compared to April 2024 which had 11619 operations. The four-year average for April is 12593 flight operations. Total operations for April were 26.3% above the 4-year average.

Monthly Operations VS Noise Comments



Monthly Operations Four Year Data



Paine Field Website: www.paineairport.com
 Noise Abatement Procedures: www.paineairport.com/159/Noise-Abatement-Procedures
 Paine Field Noise FAQ: www.paineairport.com/215/Noise-FAQs
 To submit a noise comment online: www.planenoise.com/kpae
 To submit a noise comment by phone: (425) 284-0500