



**KPAE  
— FREQUENCIES —**

	<b>VHF</b>
ATIS	128.65
Tower	West 132.95/East 120.2
Ground	121.8
Clearance Delivery	127.175
Seattle Approach/Departure	128.5
Propeller Aero (FBO)	122.95
VOR/DME	110.6
ILS	109.3
Regal Air (FBO)	123.3
FSS (Seattle Radio)	122.2

**— RUNWAYS —**

Identifier	Length	Pavement	Lighting
16R-34L	9010 x 150	GRVD ASPH/CONC	HIRL TDZ
16R			MALSFR PAPI
34L			MALSFR PAPI
16L-34R	3004 x 75	Asphalt	MIRL REILS PAPI


**— GENERAL INFORMATION —**

Elevation	607'
<b>Traffic Pattern Altitude</b>	
Small Propeller Aircraft	1600' MSL
Jet, Turboprop & Large Propeller Aircraft	2100' MSL
Magnetic Variation	15° East
Services	Major/Minor
Air Traffic Control Hours	0700-2100 Local

**— AIR OPERATIONS AREAS —**

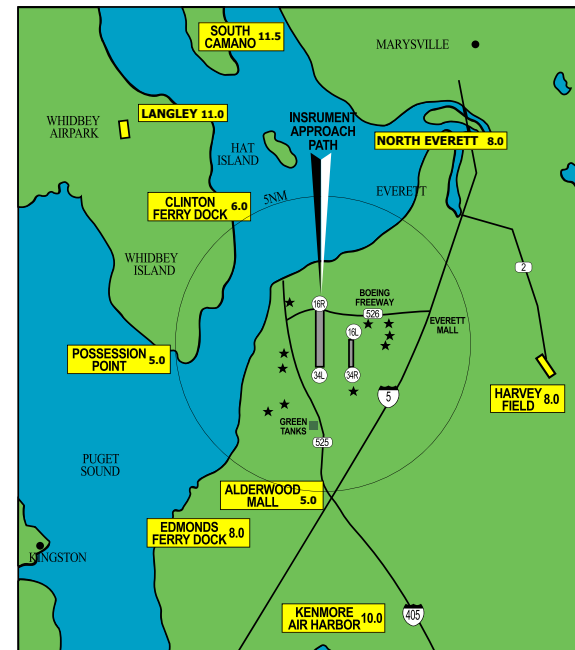
**Non-Movement Areas**  
\*Authorized Access Only\*

**Movement Areas**  
\*Tower Clearance Required\*

  
Terminal & SIDA area  
\*Restricted Area\*

 Official Lighted Windsock	 Wash Rack
 Transient Parking, Aircraft under 12,500	 VOR Check Point
 Transient Parking, Aircraft over 12,500	
 Business Locator Number	Latitude 47° 54' 26.44"
 Flight Planning Room	Longitude 122° 16' 55.93"

**TRAFFIC AREA MAP  
AND  
NOISE ABATEMENT PROCEDURES**



ENTER THE TRAFFIC PATTERN AT OR ABOVE 1600' MSL

## PAINE FIELD - SNOHOMISH COUNTY AIRPORT

9901 24TH PL W, STE A (425) 388-5125 telephone  
EVERETT, WASHINGTON 98204 (425) 355-9883 fax  
All phone numbers are area code 425 unless otherwise noted.

AIRPORT ADMINISTRATION	MAP ID	PHONE
Airport Administration Office	7	388-5125
Airport Operations	7	388-5125
Airport Fire Department	3	388-5480
Airport Maintenance Department	16	388-5490

## FEDERAL AVIATION ADMINISTRATION & US CUSTOMS

FAA Air Traffic Control Tower	6	923-1400
Paine Field ATIS		355-9797
Seattle Flight Service Station		928 583-6154
U.S. Customs		259-0246

## AIR TRANSPORT MANUFACTURING AND REPAIR

Aviation Technical Services	8	347-3030
-----------------------------	---	----------

## AIRCRAFT MAINTENANCE AND SERVICE

Services include but are not limited to: Aircraft Parking & Ramp Services, Repair, Oxygen Aircraft & Avionics Inspection, Aircraft Interiors Services, Aircraft Painting.

Propeller Aero Services (FBO)	5	341-1474
Cannon Aircraft Interiors	11	348-6924
Crown Aviation/Regal Air	14	355-4088
Sunquest Air Specialties	12	355-4516

## AIRCRAFT RENTAL , FLIGHT INSTRUCTION, CHARTER/SCENIC FLIGHTS AND PILOT SUPPLIES

Kenmore	11	866 435-9524
Rainier Flight	11	610-6293 ext 3
Regal Air	13	353-9123
Erin Air	18	206-329-4664

## FUEL AND SERVICE

Propeller Aero Services (FBO)	5	341-1474	100LL/Jet A	UNICOM	122.95
PAS Self-Serve Fuel Island	13	341-1474	100LL	UNICOM	122.95
Regal Air (FBO)	13	353-9123	100LL	UNICOM	123.30
Hilton Garden Inn	2	423-9000			
Enterprise Rent-A-Car	5	438-0322			

## ATTRACTIONS

Future of Flight Aviation Center	1	800 464-1476
Boeing Company Tour Center	1	800 464-1476
Edmonds College AMSC and WATR	4	347-8928
Everett Comm. College Aviation Dept	4	388-9533
Museum of Flight Restoration Center	9	745-5150
Flying Heritage & Combat Armor Museum	17	877 342-3404

## NOISE ABATEMENT PROCEDURES FOR ALL AIRCRAFT

Noise abatement procedures are designed to minimize exposure of residential areas to aircraft noise, while ensuring safety of flight operations. There are communities surrounding the airport which are noise sensitive. We want to minimize the noise impacts on these communities. The procedures described herein are intended for noise abatement procedures and are subject to air traffic control and pilot discretion for reasons of safety.

## SMALL PROPELLER AIRCRAFT

(Single and twin engine under 12,500 pounds)

- Transient Tie-Down parking at Central Ramp and ramp parking on the Bravo ramp in front of FBO Propeller Aero (shown on map).
- Avoid overflights of school sites (shown on map).
- Aircraft with engines rated over 250 total horsepower are requested to use Runway 16R-34L except itinerant operations as noted below.

### Approaches:

- Itinerant arrivals and low approaches of small aircraft over 250 horsepower are authorized on Runways 16L and 34R.
- Enter Class D Airspace from the suggested reporting points as shown on the map at or above 1600' MSL.
- Runway 16R-34L, & Runway 16L-34R: Remain as high as practical until intercepting the PAPI or glide slope unless otherwise directed by ATC.

### Departures:

- On initial climb-out, fly runway heading to 1100' MSL or higher before turning, unless otherwise directed by ATC.
- Runway 16L-34R: Avoid intersection departures.
- Maintain 1600' MSL or higher until leaving the Class D Airspace

## JET, TURBOPROP& LARGE PROPELLER AIRCRAFT

### Use Runway16R-34L:

- Repetitive touch and go operations and training flights are discouraged.
- Runway 34L departures are encouraged in calm wind conditions.

### Approaches:

- Standard NBAA/Aircraft Operating Manual noise abatement procedures should be used.
- Circle to land maneuvers are discouraged.
- Missed approach instructions will be assigned by ATC.

### VFR Approaches:

- Downwind should be flown mid-channel at pattern altitude, 2100' MSL

### Departures (IFR or VFR):

- Intersection takeoffs are discouraged.
- Standard NBAA/Aircraft Operating Manual noise abatement procedures should be used.
- Runway 34L: Avoid turns before reaching the shoreline.
- Runway 16R: Avoid turns until reaching 3000' MSL.

## ROTARY WING AIRCRAFT

- **Civilian**- Contact Air Traffic Control for takeoff and landing procedures.

## OPERATIONS WITH ATC TOWER CLOSED

- Announce intentions on CTAF 132.95.
- Runway 16L-34R closed.
- **Caution for converging traffic on base to final legs to Runway 16R - 34L.**
  - Large aircraft fly a west pattern to 16R or 34L over the water, 2100' MSL
  - Small aircraft fly east pattern to 16R or 34L, 1600' MSL
- Intersection departures prohibited
- Repetitive training operations are discouraged
- PPR for Air Carrier Aircraft 2100-0700 local (388-5110 or 388-5480).