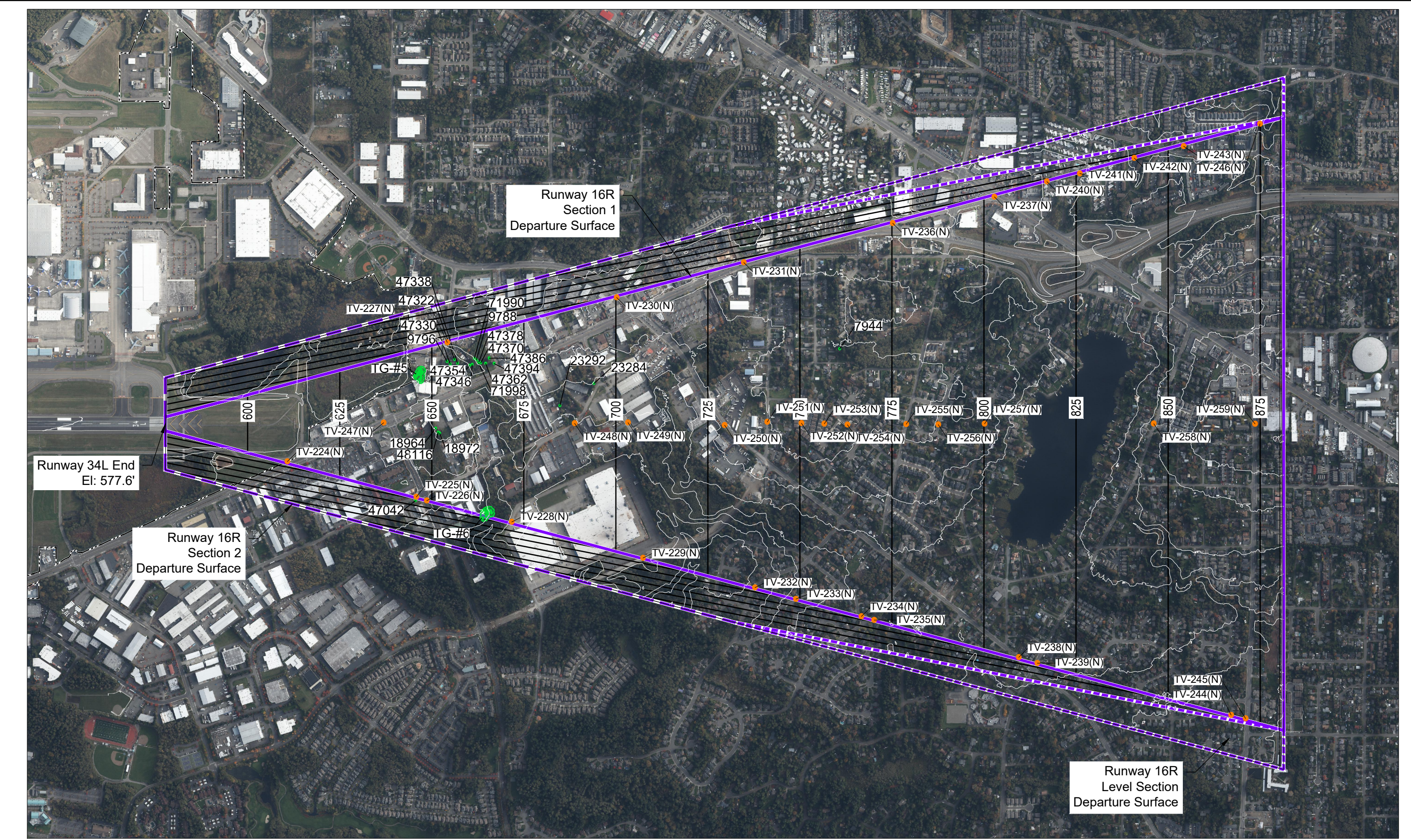
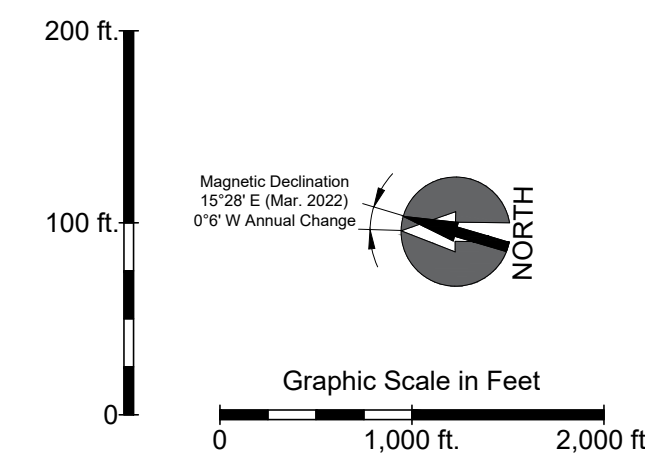
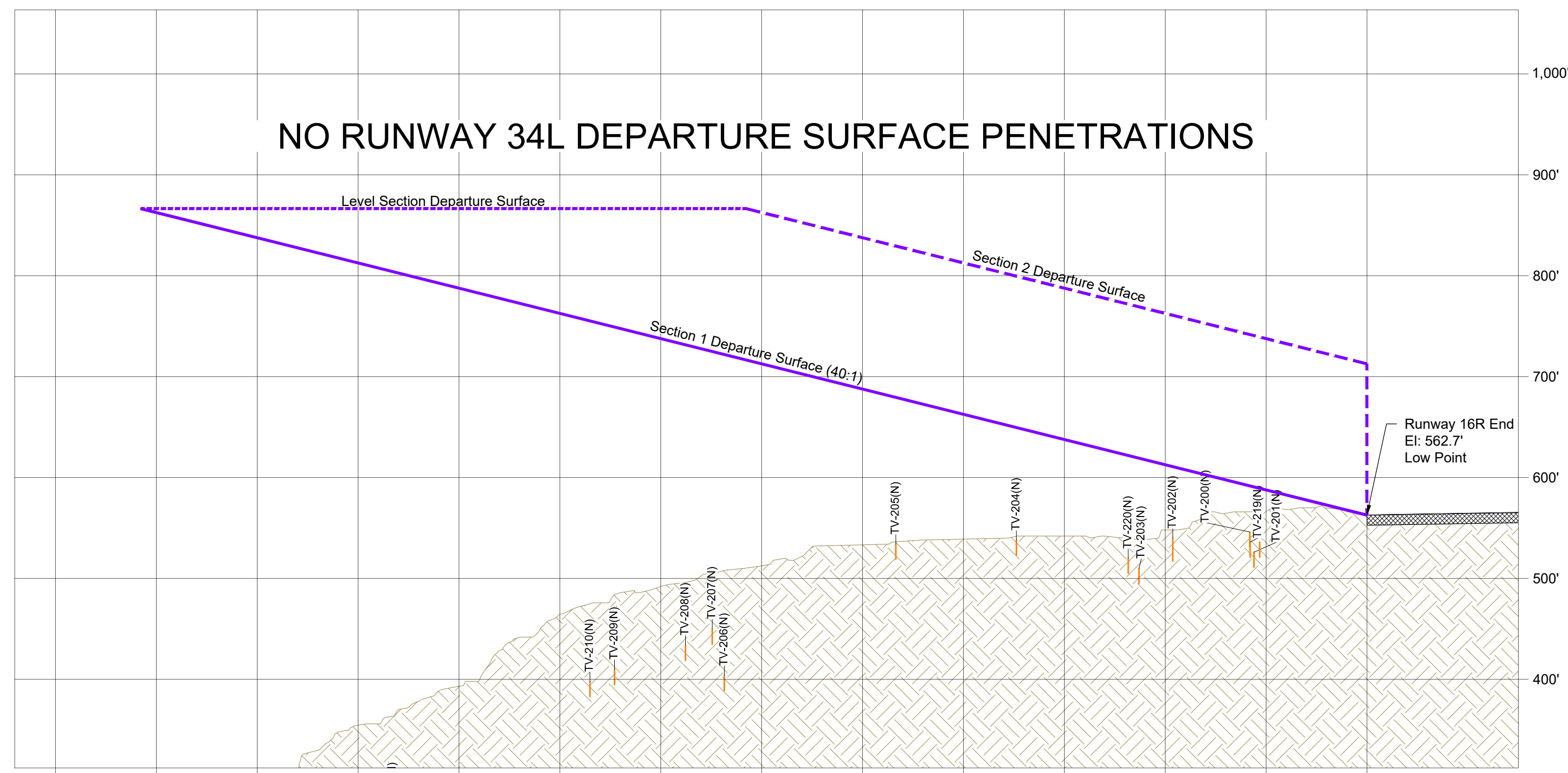


Plan View - Existing Runway 34L Departure End of Runway  
Horizontal Scale: 1"=1,000'

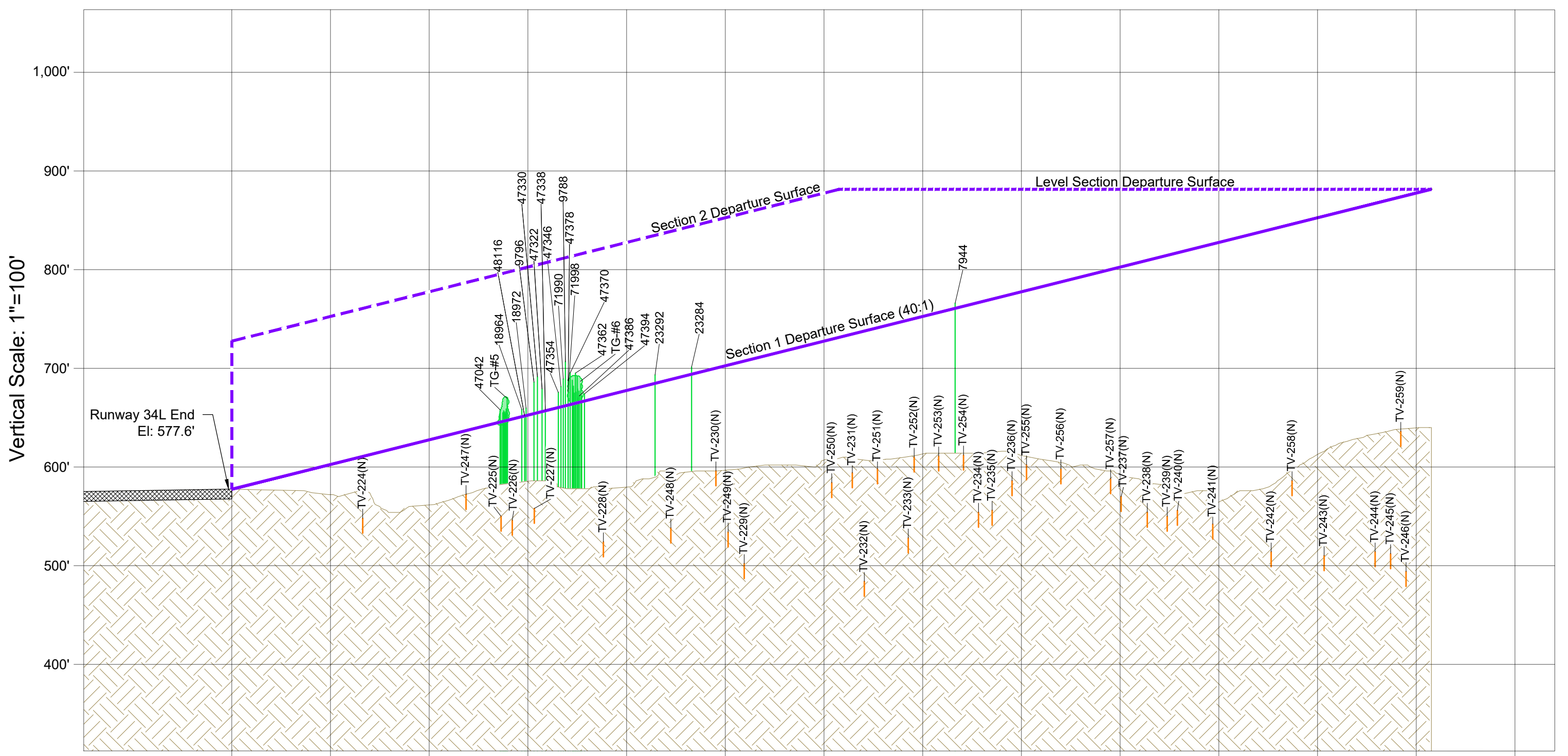
PLAN & PROFILE LEGEND		
Description	Plan	Profile
Vegetation Obstruction		
Vegetation Cluster		
Manmade Obstruction		
Traverse Point		
Composite Ground Profile		
Airport Boundary		



Plan View - Existing Runway 16R Departure End of Runway  
Horizontal Scale: 1"=1,000'



Profile View - Existing Runway 34L Departure End of Runway  
Horizontal Scale: 1"=1,000'



Profile View - Existing Runway 16R Departure End of Runway  
Horizontal Scale: 1"=1,000'

RUNWAY 34L DEPARTURE SURFACE TRAVERSE POINTS							
OBJECT ID	OBJECT DESCRIPTION	TOP ELEV (MSL)	AIRSPACE SURFACE	SURFACE PENETRATION	LAT (DMS)	LONG (DMS)	DISPOSITION
TV-200N	CASCADE LOOP	548.0	TSS DPRT RW34L	-45.8	47 55 28.21 N	122 17 14.87 W	--
TV-201N	CASCADE LOOP	558.0	TSS DPRT RW34L	-45.8	47 55 27.82 N	122 17 08.85 W	--
TV-202N	RAILROAD +23	540.0	TSS DPRT RW34L	-70.8	47 55 35.86 N	122 17 00.84 W	--
TV-203N	78TH ST SW	510.0	TSS DPRT RW34L	-109.3	47 55 39.02 N	122 17 19.30 W	--
TV-204N	W PERMETER RD	538.0	TSS DPRT RW34L	-111.6	47 55 31.24 N	122 16 55.35 W	--
TV-205N	BOENIG PERIMETER RD	534.0	TSS DPRT RW34L	-145.5	47 56 03.08 N	122 16 50.75 W	--
TV-206N	SEAWAY BLVD	464.0	TSS DPRT RW34L	-317.6	47 56 19.91 N	122 16 44.37 W	--
TV-207N	HILL ST	450.0	TSS DPRT RW34L	-276.0	47 56 20.57 N	122 17 36.80 W	--
TV-208N	RIDGE ST	434.0	TSS DPRT RW34L	-297.6	47 56 23.15 N	122 17 37.80 W	--
TV-209N	9TH ST	410.0	TSS DPRT RW34L	-339.2	47 56 30.10 N	122 17 40.96 W	--
TV-210N	8TH ST	389.0	TSS DPRT RW34L	-357.3	47 56 32.48 N	122 17 42.02 W	--
TV-211N	6TH ST	136.0	TSS DPRT RW34L	-644.8	47 56 42.51 N	122 17 46.22 W	--
TV-212N	5TH ST	110.0	TSS DPRT RW34L	-678.0	47 56 45.34 N	122 17 47.33 W	--
TV-213N	4TH ST	64.0	TSS DPRT RW34L	-701.1	47 56 48.15 N	122 17 48.71 W	--
TV-214N	3RD ST	56.0	TSS DPRT RW34L	-703.0	47 56 50.83 N	122 17 49.58 W	--
TV-215N	2ND ST	60.0	TSS DPRT RW34L	-728.2	47 56 53.70 N	122 17 50.99 W	--
TV-216N	MUKILTEO LN	100.0	TSS DPRT RW34L	-180.5	47 56 56.58 N	122 17 53.13 W	--
TV-217N	RAILROAD +23	14.0	TSS DPRT RW34L	-804.3	47 56 57.29 N	122 17 52.50 W	--
TV-218N	MUKILTEO BLVD	184.0	TSS DPRT RW34L	-671.2	47 57 12.70 N	122 16 24.73 W	--
TV-219N	CASCADE LOOP	536.0	TSS DPRT RW34L	-65.7	47 57 06.67 N	122 17 06.67 W	--
TV-220N	RAILROAD +23	520.0	TSS DPRT RW34L	-101.9	47 56 52.11 N	122 17 11.87 W	--
TV-221N	DEBTEL ON LN	258.0	TSS DPRT RW34L	-546.2	47 57 09.47 N	122 17 15.15 W	--
TV-222N	MUKILTEO BLVD	122.0	TSS DPRT RW34L	-710.0	47 53 36.76 N	122 17 12.82 W	--
TV-223N	RAILROAD +23	18.0	TSS DPRT RW34L	-830.2	47 53 20.86 N	122 17 18.14 W	--
TV-260	SECURED AIRPORT PERIMETER RD	551	TSS-DPRT (40:1) 34L	-47.0	47 55 27.31 N	122 17 09.38 W	N/A

No Manmade or Vegetation Penetrations identified in survey.  
No Traverseway Penetrations identified in survey.

RUNWAY 16R DEPARTURE SURFACE TRAVERSE POINTS							
OBJECT ID	OBJECT DESCRIPTION	TOP ELEV (MSL)	AIRSPACE SURFACE	SURFACE PENETRATION	LAT (DMS)	LONG (DMS)	DISPOSITION
TV-224N	MUKILTEO SPEEDWAY	548.0	TSS DPRT RW16R	-42.8	47 53 19.14 N	122 17 18.72 W	--
TV-225N	CYRUS WAY	550.0	TSS DPRT RW16R	-95.8	47 53 17.79 N	122 16 53.47 W	--
TV-226N	HAROR POINTE BLVD SW	546.0	TSS DPRT RW16R	-102.6	47 53 16.80 N	122 17 21.91 W	--
TV-227N	12TH ST SW	558.0	TSS DPRT RW16R	-96.2	47 53 16.46 N	122 17 27.34 W	--
TV-228N	HARBOUR BEACH DR	524.0	TSS DPRT RW16R	-147.7	47 52 59.71 N	122 16 45.87 W	--
TV-229N	SOUTH RD	502.0	TSS DPRT RW16R	-205.4	47 52 48.13 N	122 16 40.01 W	--
TV-230N	BEVERLY PARK DR	596.0	TSS DPRT RW16R	-104.2	47 52 44.41 N	122 17 31.79 W	--
TV-231N	MUKILTEO SPEEDWAY	594.0	TSS DPRT RW16R	-140.7	47 52 40.00 N	122 17 33.52 W	--
TV-232N	HARBOUR HEIGHTS DR	484.0	TSS DPRT RW16R	-253.8	47 52 32.95 N	122 16 28.96 W	--
TV-233N	44TH AVE W	528.0	TSS DPRT RW16R	-225.9	47 52 31.99 N	122 17 36.98 W	--
TV-234N	42ND AVE W	554.0	TSS DPRT RW16R	-212.7	47 52 30.22 N	122 16 33.40 W	--
TV-235N	47TH PL W	556.0	TSS DPRT RW16R	-214.2	47 52 19.38 N	122 16 28.96 W	--
TV-236N	HIGHWAY 99	586.0	TSS DPRT RW16R	-189.2	47 52 16.01 N	122 17 42.28 W	--
TV-237N	HIGHWAY 99	570.0	TSS DPRT RW16R	-232.8	47 52 14.91 N	122 17 43.15 W	--
TV-238N	BEVERLY PARK DR	554.0	TSS DPRT RW16R	-255.5	47 52 13.76 N	122 16 29.37 W	--
TV-239N	PIONIC POINT RD	550.0	TSS DPRT RW16R	-264.5	47 52 13.24 N	122 16 25.00 W	--
TV-240N	ADMIRALTY WAY	556.0	TSS DPRT RW16R	-261.1	47 52 04.43 N	122 16 22.43 W	--
TV-241N	143 ST SW	542.0	TSS DPRT RW16R	-284.0	47 51 59.18 N	122 16 20.44 W	--
TV-242N	144TH ST SW	514.0	TSS DPRT RW16R	-326.8	47 51 53.14 N	122 17 05.98 W	--
TV-243N	145TH ST SW	510.0	TSS DPRT RW16R	-344.2	47 51 51.99 N	122 17 04.47 W	--
TV-244N	147TH PL SW	514.0	TSS DPRT RW16R	-355.2	47 51 51.01 N	122 16 16.99 W	--
TV-245N	148TH ST SW	512.0	TSS DPRT RW16R	-366.1	47 52 24.46 N	122 17 04.43 W	--
TV-246N	148TH ST SW	484.0	TSS DPRT RW16R	-381.0	47 53 04.01 N	122 17 06.04 W	--
TV-247N	MUKILTEO SPEEDWAY	572.0	TSS DPRT RW16R	-48.9	47 52 47.92 N	122 17 05.98 W	--
TV-248N	EVEGREEN DR	546.0	TSS DPRT RW16R	-150.8	47 52 43.38 N	122 17 05.98 W	--
TV-249N	SOUTH RD	534.0	TSS DPRT RW16R	-189.3	47 52 38.88 N	122 17 05.46 W	--
TV-250N	BEVERLY PARK DR	584.0	TSS DPRT RW16R	-145.6	47 52 34.76 N	122 17 05.61 W	--
TV-251N	132ND ST SW	598.0	TSS DPRT RW16R	-143.1	47 52 28.46 N	122 17 05.98 W	--
TV-252N	133RD PL SW	610.0	TSS DPRT RW16R	-140.4	47 52 25.02 N	122 17 05.38 W	--
TV-253N	134TH ST SW	611.0	TSS DPRT RW16R	-140.6	47 52 20.52 N	122 17 04.53 W	--
TV-254N	WIGEN RD	612.0	TSS DPRT RW16R	-139.9	47 52 01.92 N	122 17 04.71 W	--
TV-255N	LINCOLN WAY	602.0	TSS DPRT RW16R	-176.9	47 51 51.05 N	122 17 04.52 W	--
TV-256N	138TH ST SW	598.0	TSS DPRT RW16R	-189.6	47 52 23.02 N	122 17 05.38 W	--
TV-257N	BERNESE WAY	586.0	TSS DPRT RW16R	-212.2	47 52 20.65 N	122 17 05.13 W	--
TV-258N	SHELBY RD	586.0	TSS DPRT RW16R	-200.7	47 52 01.92 N	122 17 04.71 W	--
TV-259N	148TH ST SW	636.0	TSS DPRT RW16R	-237.6	47 51 51.95 N	122 17 04.52 W	--

No Manmade Penetrations identified in survey.  
No Traverseway Penetrations identified in survey.

RUNWAY 16R DEPARTURE SURFACE OBSTACLES								
OBJECT ID	OBJECT DESCRIPTION	TOP ELEV (MSL)	HEIGHT (AGL)	AIRSPACE SURFACE	SURFACE PENETRATION	LAT (DMS)	LONG (DMS)	DISPOSITION
7944	(VEG) TREE	765.9	145	TSS-DPRT (40:1) 16R	5.1	47 53 25.72 N	122 16 53.56 W	See Note 8
9788	(VEG) TREE	706.6	121	TSS-DPRT (40:1) 16R	44.5	47 53 14.66 N	122 16 56.17 W	See Note 8
9796	(VEG) TREE	686.2	293	TSS-DPRT (40:1) 16R	32.0	47 53 17.79 N	122 16 56.5 W	See Note 8
9894	(VEG) TREE	669.7	65	TSS-DPRT (40:1) 16R	22.3	47 53 20.47 N	122 16 56.43 W	See Note 8
18964	(VEG) TREE	658.2	7.0	TSS-DPRT (40:1) 16R	7.1	47 53 18.9 N	122 17 17.17 W	See Note 8
18972	(VEG) TREE	659.7	7.1	TSS-DPRT (40:1) 16R	7.5	47 53 18.47 N	122 17 17.65 W	See Note 8
21927	(VEG) TREE	662.0	26.9	TSS-DPRT (40:1) 16R	26.9	47 53 13.26 N	122 16 56.93 W	See Note 8
23284	(VEG) TREE	701.3	143	TSS-DPRT (40:1) 16R	7.3	47 53 2.01 N	122 16 59.63 W	See Note 8
23292	(VEG) TREE	693.4	148	TSS-DPRT (40:1) 16R	8.5	47 53 5.62 N	122 17 2.27 W	See Note 8
42062	(VEG) TREE	657.9	154	TSS-DPRT (40:1) 16R	0.8	47 53 20.98 N	122 16 56.76 W	See Note 8
42050	(VEG) TREE	684.3	135	TSS-DPRT (40:1) 16R	16.3	47 53 12.87 N	122 17 20.22 W	See Note 8
42059	(VEG) TREE	677.0	129	TSS-DPRT (40:1) 16R	11.5	47 53 13.98 N	122 17 20.2 W	See Note 8
42068	(VEG) TREE	670.3	121	TSS-DPRT (40:1) 16R	5.1	47 53 13.2 N	122 17 20.34 W	See Note 8
42074	(VEG) TREE	675.0	128	TSS-DPRT (40:1) 16R	10.6	47 53 13.54 N	122 17 20.17 W	See Note 8
42082	(VEG) TREE	679.7	133	TSS-DPRT (40:1) 16R	15.7	47 53 13.66 N	122 17 20.3 W	See Note 8
42090	(VEG) TREE	682.0	134	TSS-DPRT (40:1) 16R	17.9	47 53 13.62 N	122 17 20.48 W	See Note 8
42098	(VEG) TREE	679.3	129	TSS-DPRT (40:1) 16R	14.1	47 53 13.2 N	122 17 20.68 W	See Note 8
42106	(VEG) TREE	672.3	122	TSS-DPRT (40:1) 16R	6.0	47 53 12.76 N	122 17 20.54 W	See Note 8
42114	(VEG) TREE	667.9	134	TSS-DPRT (40:1) 16R	5.1	47 53 13.71 N	122 17 21.37 W	See Note 8
42130	(VEG) TREE	648.1	67	TSS-DPRT (40:1) 16R	1.2	47 53 20.63 N	122 16 59.65 W	See Note 8
42146	(VEG) TREE	649.2	68	TSS-DPRT (40:1) 16R	2.5	47 53 20.69 N	122 16 59.44 W	See Note 8
42150	(VEG) TREE	646.0	67	TSS-DPRT (40:1) 16R	0.3	47 53 21.12 N	122 16 59.02 W	See Note 8
42178	(VEG) TREE	646.8	68	TSS-DPRT (40:1) 16R	1.0	47 53 21.05 N	122 16 58.87 W	See Note 8
42186	(VEG) TREE	658.8	78	TSS-DPRT (40:1) 16R	11.7	47 53 20.55 N	122 16 58.17 W	See Note 8
42194	(VEG) TREE	656.1	76	TSS-DPRT (40:1) 16R	9.1	47 53 20.6 N	122 16 58.73 W	See Note 8
42202	(VEG) TREE	657.0	77	TSS-DPRT (40:1) 16R	10.6	47 53 20.8 N	122 16 58.33 W	See Note 8
42210	(VEG) TREE	655.0	75	TSS-DPRT (40:1) 16R	8.7	47 53 20.87 N	122 16 58.67 W	See Note 8
42218	(VEG) TREE	646.3	67	TSS-DPRT (40:1) 16R	0.1	47 53 20.91 N	122 16 58.40 W	See Note 8
42226	(VEG) TREE	655.7	77	TSS-DPRT (40:1) 16R	9.1	47 53 20.75 N	122 16 57.91 W	See Note 8
42234	(VEG) TREE	648.8	69	TSS-DPRT (40:1) 16R	1.7	47 53 20.92 N	122 16 57.8 W	See Note 8
42250	(VEG) TREE	655.0	74	TSS-DPRT (40:1) 16R	7.5	47 53 20.42 N	122 16 58.24 W	See Note 8
42258	(VEG) TREE	654.1	74	TSS-DPRT (40:1) 16R	7.2	47 53 20.65 N	122 16 58.21 W	See Note 8
42322	(VEG) TREE	678.1	162	TSS-DPRT (40:1) 16R	22.0	47 53 17.1 N	122 16 56.15 W	See Note 8
42330	(VEG) TREE	691.5	247	TSS-DPRT (40:1) 16R	39.5	47 53 17.45 N	122 16 56.89 W	See Note 8
42338	(VEG) TREE	658.0	195	TSS-DPRT (40:1) 16R	11.2	47 53 13.58 N	122 17 21.03 W	See Note 8
42346	(VEG) TREE	681.9	203	TSS-DPRT (40:1) 16R	20.3	47 53 15.98 N	122 16 56.82 W	See Note 8
42354	(VEG) TREE	675.5	84	TSS-DPRT (40:1) 16R	15.2	47 53 15.38 N	122 16 57.07 W	See Note 8
42362	(VEG) TREE	695.1	110	TSS-DPRT (40:1) 16R	30.5	47 53 14.95 N	122 16 56.72 W	See Note 8
42370	(VEG) TREE	666.3	110	TSS-DPRT (40:1) 16R	32.0	47 53 14.18 N	122 16 56.83 W	See Note 8
42378	(VEG) TREE	697.3	102	TSS-DPRT (40:1) 16R	24.1	47 53 14.38 N	122 16 56.49 W	See Note