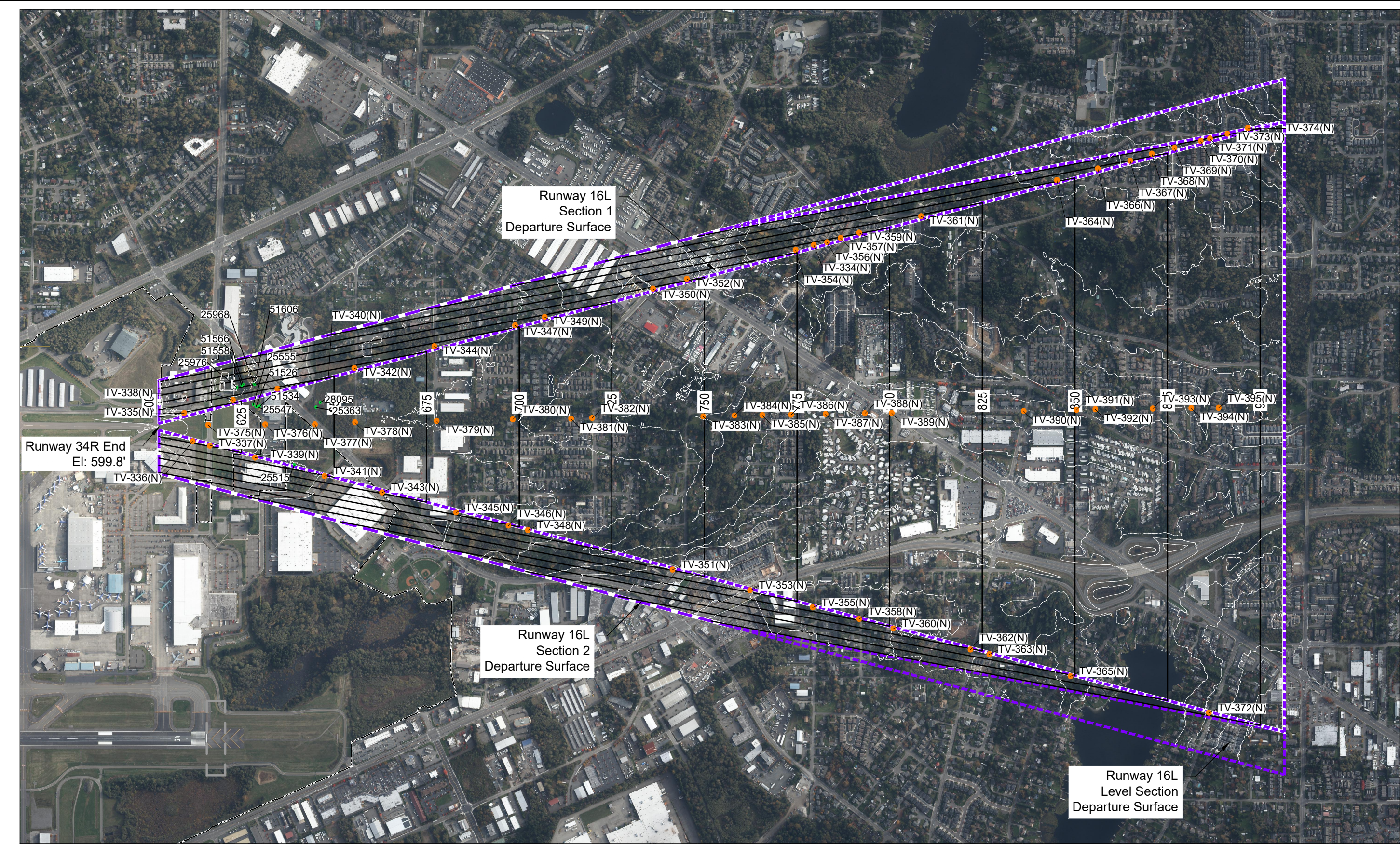
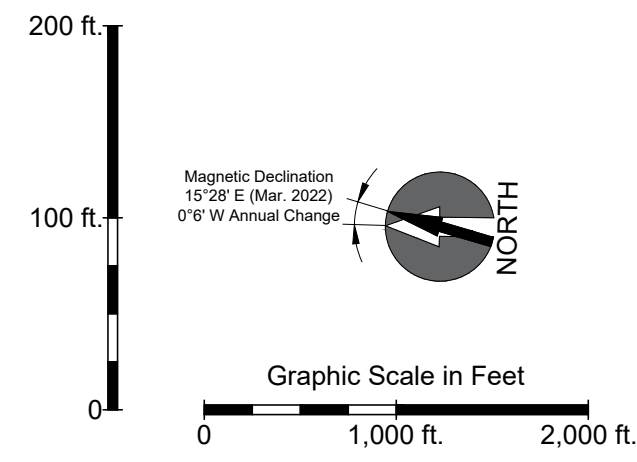
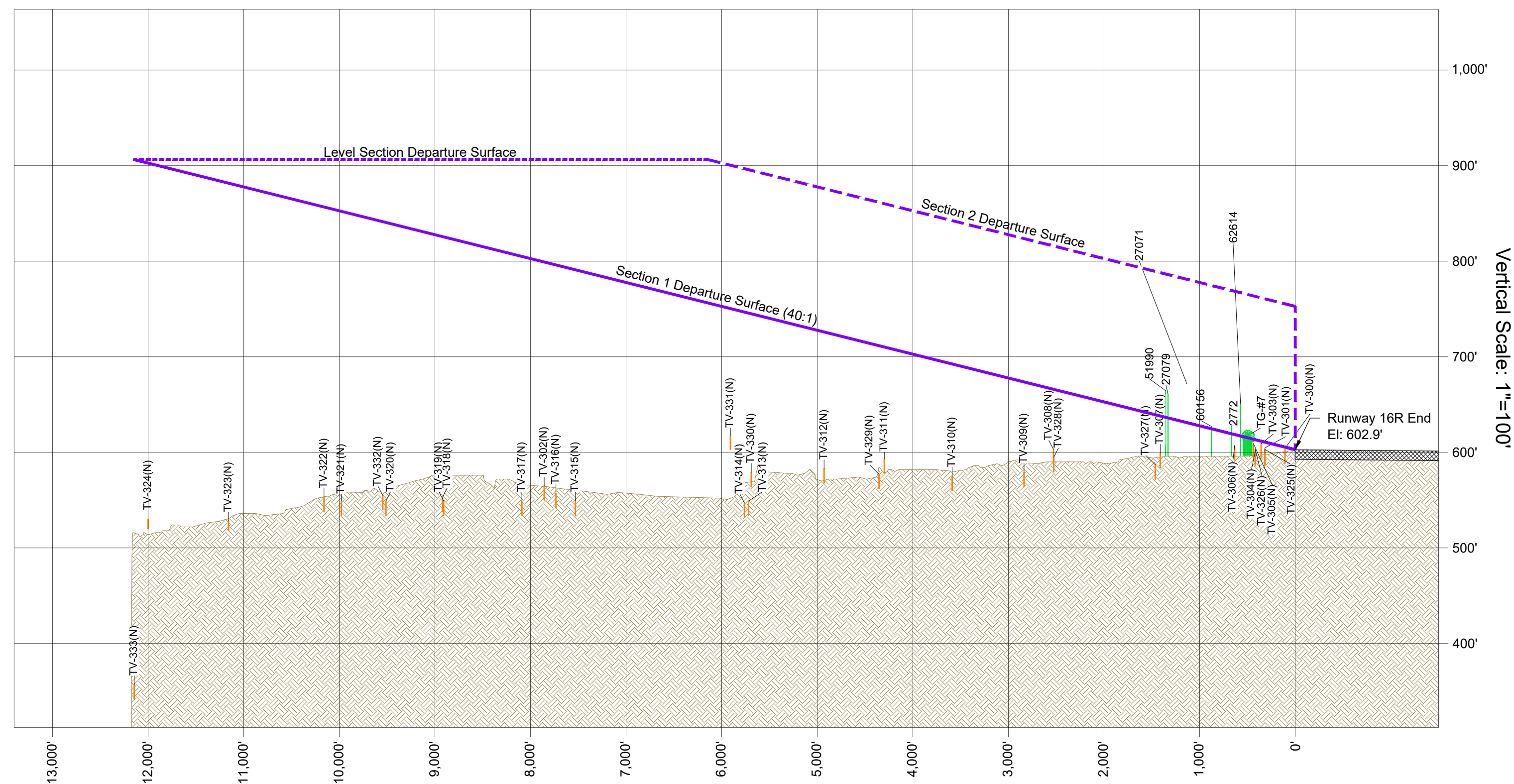


Plan View - Existing Runway 34R Departure End of Runway  
Horizontal Scale: 1"=1,000'

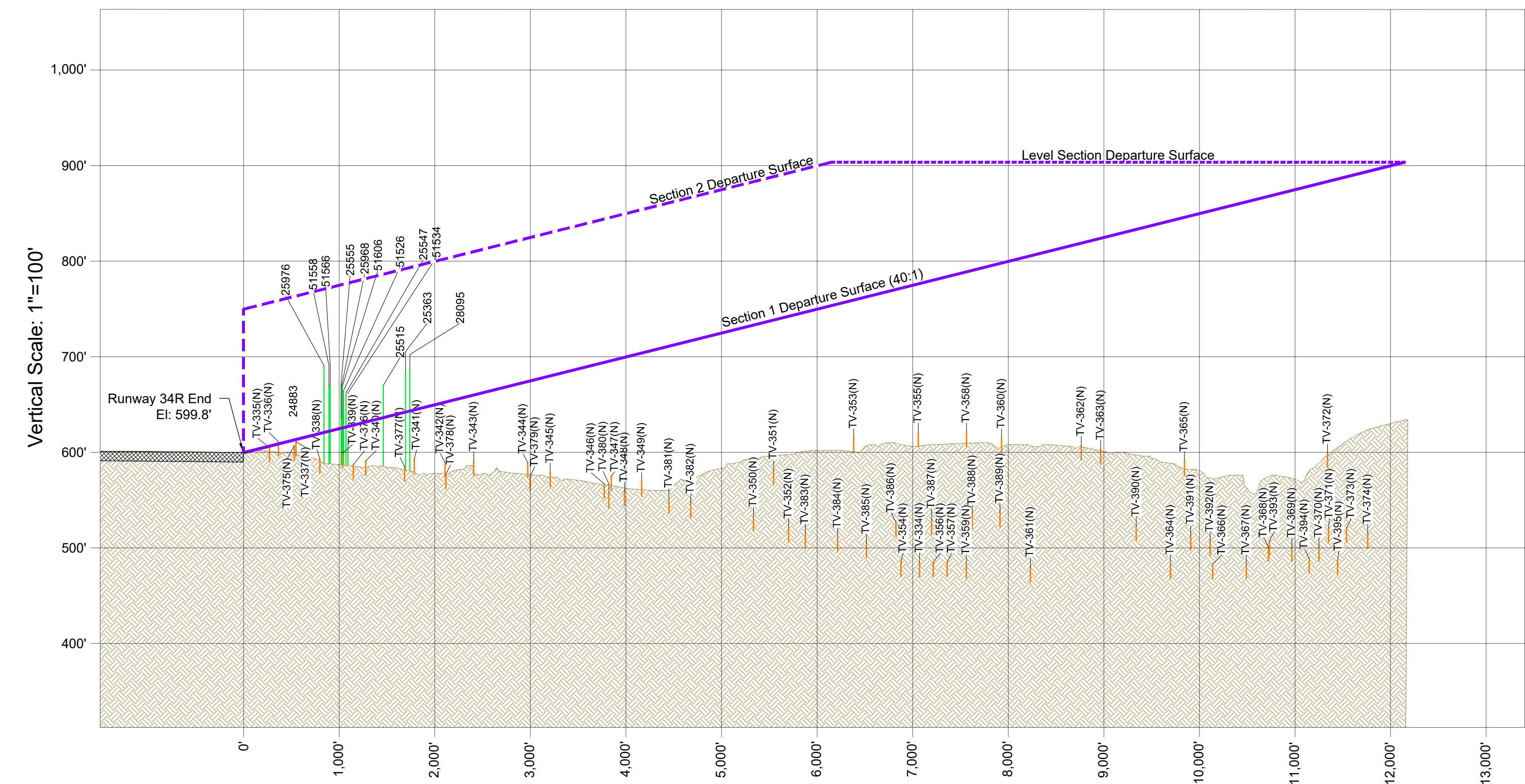
PLAN & PROFILE LEGEND		
Description	Plan	Profile
Vegetation Obstruction		
Vegetation Cluster		
Mannmade Obstruction		
Traverse Point		
Composite Profile		
Airport Boundary		



Plan View - Existing Runway 16L Departure End of Runway  
Horizontal Scale: 1"=1,000'



Profile View - Existing Runway 34R Departure End of Runway  
Horizontal Scale: 1"=1,000'



Profile View - Existing Runway 16L Departure End of Runway  
Horizontal Scale: 1"=1,000'

RUNWAY 34R DEPARTURE SURFACE TRAVERSE POINTS						
OBJECT ID	OBJECT DESCRIPTION	TOP ELEV (MSL)	AIRSPACE SURFACE PENETRATION	LAT (DMS)	LONG (DMS)	DISPOSITION
TV-301N	E PERMETER RD	603.0	TSS DPRT RWHLR	-2.4	47 54 24.20 N	122 16 16.67 W
TV-302N	W CASINO RD	560.0	TSS DPRT RWHLR	-23.2	47 55 40.64 N	122 16 21.72 W
TV-303N	E PERMETER RD	606.0	TSS DPRT RWHLR	-2.8	47 54 26.65 N	122 16 20.55 W
TV-304N	100TH ST SW	601.0	TSS DPRT RWHLR	-12.2	47 54 27.20 N	122 16 15.61 W
TV-305N	100TH ST SW	609.0	TSS DPRT RWHLR	-4.6	47 54 27.41 N	122 16 20.87 W
TV-306N	29TH AVE W	607.6	TSS DPRT RWHLR	-11.6	47 54 30.35 N	122 16 21.47 W
TV-307N	PERMETER RD	599.0	TSS DPRT RWHLR	-39.0	47 54 37.13 N	122 16 12.07 W
TV-308N	BATH ST SW	603.0	TSS DPRT RWHLR	-62.9	47 54 48.18 N	122 16 07.89 W
TV-309N	BATH ST SW	579.0	TSS DPRT RWHLR	-84.7	47 54 51.06 N	122 16 30.80 W
TV-310N	BATH ST SW	575.0	TSS DPRT RWHLR	-117.4	47 54 58.39 N	122 16 33.84 W
TV-311N	KASCO PARK RD	583.0	TSS DPRT RWHLR	-117.2	47 55 05.71 N	122 16 01.20 W
TV-312N	W CASINO RD	589.0	TSS DPRT RWHLR	-142.0	47 55 11.96 N	122 16 56.04 W
TV-313N	BOEING FWY	549.0	TSS DPRT RWHLR	-196.7	47 55 19.78 N	122 15 56.24 W
TV-314N	CASCADE LOOP	547.0	TSS DPRT RWHLR	-199.9	47 55 19.78 N	122 16 42.89 W
TV-315N	BOEING ACCESS RD	549.0	TSS DPRT RWHLR	-242.0	47 55 37.74 N	122 15 45.26 W
TV-316N	W CASINO RD	557.0	TSS DPRT RWHLR	-239.1	47 55 39.12 N	122 16 51.19 W
TV-317N	SEAWAY BLVD RAMP	549.0	TSS DPRT RWHLR	-265.0	47 55 42.38 N	122 16 47.98 W
TV-318N	W PERMETER RD	553.0	TSS DPRT RWHLR	-272.7	47 55 50.78 N	122 16 56.09 W
TV-319N	W PERMETER RD	549.0	TSS DPRT RWHLR	-278.4	47 55 51.39 N	122 16 44.08 W
TV-320N	BOEING PERMETER RD	549.0	TSS DPRT RWHLR	-291.5	47 55 57.85 N	122 16 58.89 W
TV-321N	SEAWAY BLVD	549.0	TSS DPRT RWHLR	-303.2	47 56 01.99 N	122 16 40.16 W
TV-322N	BOEING PERMETER RD	553.0	TSS DPRT RWHLR	-303.7	47 56 02.99 N	122 17 01.05 W
TV-323N	PRIVATE RD	528.0	TSS DPRT RWHLR	-353.3	47 56 13.65 N	122 16 35.67 W
TV-324N	PRIVATE RD	530.0	TSS DPRT RWHLR	-372.7	47 56 22.01 N	122 15 52.41 W
TV-325N	E PERMETER RD	603.0	TSS DPRT RWHLR	-27.7	47 54 26.26 N	122 16 18.22 W
TV-326N	100TH ST SW	603.0	TSS DPRT RWHLR	-19.2	47 54 27.38 N	122 16 18.25 W
TV-327N	29TH AVE W	587.0	TSS DPRT RWHLR	-52.3	47 54 31.57 N	122 16 17.77 W
TV-328N	BATH ST SW	595.0	TSS DPRT RWHLR	-70.9	47 54 48.04 N	122 16 19.30 W
TV-329N	KASCO PARK RD	577.0	TSS DPRT RWHLR	-134.4	47 55 00.03 N	122 16 20.15 W
TV-330N	CASCADE LOOP	579.0	TSS DPRT RWHLR	-166.0	47 55 19.26 N	122 16 20.90 W
TV-331N	BOEING ACCESS RD	618.0	TSS DPRT RWHLR	-132.5	47 55 21.41 N	122 16 20.93 W
TV-332N	BOEING PERMETER RD	620.0	TSS DPRT RWHLR	-204.4	47 55 27.28 N	122 16 21.00 W
TV-333N	SEAWAY BLVD	357.0	TSS DPRT RWHLR	-549.3	47 56 22.94 N	122 16 23.97 W

RUNWAY 34R DEPARTURE SURFACE OBSTACLES							
OBJECT ID	OBJECT DESCRIPTION	TOP ELEV (MSL)	HEIGHT (AGL)	AIRSPACE SURFACE PENETRATION	LAT (DMS)	LONG (DMS)	DISPOSITION
2772	(VEG) TREE	627.6	50	TSS DPRT (40:1) 34R	49.3	47 54 28.72 N	122 16 15.7 W
3263	(VEG) TREE	650.2	80	TSS DPRT (40:1) 34R	22.8	47 54 26.63 N	122 16 13.94 W
3311	(VEG) TREE	659.1	65	TSS DPRT (40:1) 34R	14.3	47 54 28.69 N	122 16 22.71 W
27074	(VEG) TREE	671.3	67	TSS DPRT (40:1) 34R	49.3	47 54 28.26 N	122 16 22.77 W
27079	(VEG) TREE	660.8	87	TSS DPRT (40:1) 34R	24.8	47 54 28.23 N	122 16 21.84 W
27903	(VEG) TREE	621.2	35	TSS DPRT (40:1) 34R	6.7	47 54 27.82 N	122 16 15.5 W
27911	(VEG) TREE	620.7	37	TSS DPRT (40:1) 34R	5.2	47 54 28.21 N	122 16 15.59 W
27919	(VEG) TREE	620.5	38	TSS DPRT (40:1) 34R	5.3	47 54 28.05 N	122 16 15.25 W
27927	(VEG) TREE	621.9	41	TSS DPRT (40:1) 34R	1.2	47 54 28.07 N	122 16 14.91 W
27935	(VEG) TREE	621.4	42	TSS DPRT (40:1) 34R	4.3	47 54 28.29 N	122 16 15.7 W
27943	(VEG) TREE	619.5	36	TSS DPRT (40:1) 34R	2.1	47 54 27.83 N	122 16 15.11 W
27951	(VEG) TREE	615.7	31	TSS DPRT (40:1) 34R	1.4	47 54 27.84 N	122 16 15.29 W
27959	(VEG) TREE	616.7	38	TSS DPRT (40:1) 34R	0.4	47 54 28.52 N	122 16 15.19 W
49653	(VEG) TREE	644.7	74	TSS DPRT (40:1) 34R	22.2	47 54 30.96 N	122 16 14.18 W
49661	(VEG) TREE	646.3	76	TSS DPRT (40:1) 34R	23.9	47 54 30.61 N	122 16 14.79 W
49669	(VEG) TREE	645.5	75	TSS DPRT (40:1) 34R	14.3	47 54 30.61 N	122 16 13.79 W
49677	(VEG) TREE	642.7	72	TSS DPRT (40:1) 34R	14.9	47 54 30.5 N	122 16 13.96 W
51974	(VEG) TREE	644.5	51	TSS DPRT (40:1) 34R	12.3	47 54 27.76 N	122 16 22.2 W
51982	(VEG) TREE	649.7	59	TSS DPRT (40:1) 34R	22.0	47 54 29.72 N	122 16 20.2 W
51990	(VEG) TREE	644.5	49	TSS DPRT (40:1) 34R	27.9	47 54 36.46 N	122 16 22.33 W
60086	(VEG) TREE	617.9	33	TSS DPRT (40:1) 34R	2.7	47 54 27.07 N	122 16 15.98 W
60074	(VEG) TREE	618.9	34	TSS DPRT (40:1) 34R	4.1	47 54 27.66 N	122 16 15.54 W
60082	(VEG) TREE	618.4	30	TSS DPRT (40:1) 34R	2.1	47 54 27.72 N	122 16 15.46 W
60090	(VEG) TREE	618.2	33	TSS DPRT (40:1) 34R	3.3	47 54 27.74 N	122 16 15.24 W
60106	(VEG) TREE	621.1	39	TSS DPRT (40:1) 34R	6.3	47 54 27.91 N	122 16 15.3 W
60122	(VEG) TREE	618.2	40	TSS DPRT (40:1) 34R	0.1	47 54 28.38 N	122 16 14.93 W
60158	(VEG) TREE	627.1	59	TSS DPRT (40:1) 34R	2.5	47 54 28.81 N	122 16 16.05 W
62614	(VEG) TREE	651.2	57.7	TSS DPRT (40:1) 34R	25.7	47 54 28.73 N	122 16 22.98 W

No Manmade Penetrations identified in survey.  
No Traverseway Penetrations identified in survey.

RUNWAY 16L DEPARTURE SURFACE TRAVERSE POINTS						
OBJECT ID	OBJECT DESCRIPTION	TOP ELEV (MSL)	AIRSPACE SURFACE PENETRATION	LAT (DMS)	LONG (DMS)	DISPOSITION
TV-334N	131ST PL SW	465.0	TSS DPRT RWHLR	-201.6	47 52 43.99 N	122 15 47.50 W
TV-335N	MINUTEMAN DR	397.0	TSS DPRT RWHLR	-249.6	47 53 00.87 N	122 15 16.61 W
TV-336N	SNOHOMISH AIRPORT	611.0	TSS DPRT RWHLR	2.1	47 53 49.87 N	122 16 20.08 W
TV-337N	112TH ST SW	611.0	TSS DPRT RWHLR	-2.5	47 53 49.05 N	122 16 20.73 W
TV-338N	27TH AVE W	397.0	TSS DPRT RWHLR	-262.8	47 53 46.65 N	122 16 13.43 W
TV-339N	27TH AVE W	599.0	TSS DPRT RWHLR	-26.7	47 53 52.22 N	122 16 22.31 W
TV-340N	BEVERLY PARK RD	397.0	TSS DPRT RWHLR	-274.8	47 53 49.93 N	122 16 11.52 W
TV-341N	COMMANDO RD	593.0	TSS DPRT RWHLR	-51.5	47 53 35.78 N	122 16 25.28 W
TV-342N	CENTER RD	397.0	TSS DPRT RWHLR	-265.5	47 53 52.77 N	122 16 09.71 W
TV-343N	BEVERLY PARK RD	591.0	TSS DPRT RWHLR	-69.0	47 53 29.62 N	122 16 27.73 W
TV-344N	119TH ST SW	599.0	TSS DPRT RWHLR	-85.1	47 53 24.27 N	122 16 04.44 W
TV-345N	GIBSON RD	579.0	TSS DPRT RWHLR	-101.0	47 53 27.69 N	122 16 30.72 W
TV-346N	121ST PL SW	567.0	TSS DPRT RWHLR	-127.2	47 53 16.09 N	122 16 32.89 W
TV-347N	122ND ST SW	575.0	TSS DPRT RWHLR	-121.0	47 53 15.70 N	122 16 00.92 W
TV-348N	BEVERLY PARK RD	599.0	TSS DPRT RWHLR	-146.8	47 53 14.01 N	122 16 33.58 W
TV-349N	ALEXANDER RD	599.0	TSS DPRT RWHLR	-159.0	47 53 12.96 N	122 16 59.54 W
TV-350N	GIBSON RD	533.0	TSS DPRT RWHLR	-200.2	47 53 01.05 N	122 16 54.83 W
TV-351N	YORK RD	581.0	TSS DPRT RWHLR	-167.4	47 52 58.55 N	122 16 39.29 W
TV-352N	HIGHWAY 99	612.0	TSS DPRT RWHLR	-221.3	47 52 57.46 N	122 16 53.17 W
TV-353N	MUKILTEO SPEEDWAY	521.0	TSS DPRT RWHLR	-144.4	47 52 50.25 N	122 16 42.38 W
TV-354N	130TH ST SW	485.0	TSS DPRT RWHLR	-286.7	47 52 45.92 N	122 16 48.33 W
TV-355N	132ND ST SW	621.0	TSS DPRT RWHLR	-155.3	47 52 53.55 N	122 16 44.94 W
TV-356N	132ND PL SW	621.0	TSS DPRT RWHLR	-295.2	47 52 42.58 N	122 16 47.95 W
TV-357N	MANOR WAY	485.0	TSS DPRT RWHLR	-289.8	47 52 41.16 N	122 16 48.34 W
TV-358N	133RD ST SW	621.0	TSS DPRT RWHLR	-167.9	47 52 56.56 N	122 16 46.87 W
TV-359N	21ST PL W	485.0	TSS DPRT RWHLR	-305.9	47 52 39.17 N	122 16 45.46 W
TV-360N	134TH PL SW	615.0	TSS DPRT RWHLR	-183.1	47 52 42.92 N	122 16 48.10 W
TV-361N	MANOR WAY	479.0	TSS DPRT RWHLR	-326.6	47 52 32.60 N	122 16 42.71 W
TV-362N	LINCOLN WAY	607.0	TSS DPRT RWHLR	-211.9	47 52 26.66 N	122 16 51.25 W
TV-363N	JEFFERSON WAY	577.0	TSS DPRT RWHLR	-221.0	47 52 23.60 N	122 16 16.88 W
TV-364N	20TH PL W	485.0	TSS DPRT RWHLR	-329.2	47 52 18.19 N	122 16 36.87 W
TV-365N	SERENAE WAY	591.0	TSS DPRT RWHLR	-254.9	47 52 15.87 N	122 16 52.23 W
TV-366N	JEFFERSON WAY	485.0	TSS DPRT RWHLR	-320.3	47 52 12.82 N	122 16 34.76 W
TV-367N	141ST PL SW	485.0	TSS DPRT RWHLR	-379.0	47 52 10.40 N	122 16 33.46 W
TV-368N	142ND PL SW	485.0	TSS DPRT RWHLR	-366.8	47 52 08.12 N	122 16 32.28 W
TV-369N	143RD PL SW	501.0	TSS DPRT RWHLR	-320.0	47 52 06.20 N	122 16 16.88 W
TV-370N	144TH LN SW	501.0	TSS DPRT RWHLR	-380.1	47 52 02.92 N	122 16 30.14 W
TV-371N	JEFFERSON WAY	521.0	TSS DPRT RWHLR	-362.6	47 52 01.94 N	122 16 29.73 W
TV-372N	SHELLEY RD	599.0	TSS DPRT RWHLR	-294.3	47 52 01.12 N	122 16 00.76 W
TV-373N	19TH AVE W	521.0	TSS DPRT RWHLR	-367.3	47 52 00.09 N	122 16 28.92 W
TV-374N	18TH PL W	515.0	TSS DPRT RWHLR	-378.8	47 51 57.92 N	122 16 27.88 W
TV-375N	112TH ST SW	607.0	TSS DPRT RWHLR	-41.1	47 53 42.92 N	122 16 17.45 W
TV-376N	27TH AVE W	587.0	TSS DPRT RWHLR	-41.5	47 53 42.16 N	122 16 17.23 W
TV-377N	BEVERLY PARK RD	587.0	TSS DPRT RWHLR	-69.9	47 53 36.87 N	122 16 17.08 W
TV-378N	CENTER RD	577.0	TSS DPRT RWHLR	-75.8	47 53 32.60 N	122 16 16.88 W
TV-379N	119TH ST SW	578.0	TSS DPRT RWHLR	-69.8	47 53 23.91 N	122 16 16.26 W
TV-380N	112ND ST SW	587.0	TSS DPRT RWHLR	-138.3	47 53 15.79 N	122 16 15.88 W

RUNWAY 16L DEPARTURE SURFACE TRAVERSE POINTS						
OBJECT ID	OBJECT DESCRIPTION	TOP ELEV (MSL)	AIRSPACE SURFACE PENETRATION	LAT (DMS)	LONG (DMS)	DISPOSITION
TV-381N	27TH PL W	591.0	TSS DPRT RWHLR	-160.1	47 53 09.58 N	122 16 15.58 W
TV-382N	GIBSON RD</					